

À des fins de recherche uniquement

Anticorps Polyclonal de lapin anti-GPX1



Numéro de catalogue: 29329-1-AP

7 Publications

Informations de base

Numéro de catalogue: 29329-1-AP	Numéro d'acquisition GenBank: BC000742	Méthode de purification: Purification par affinité contre l'antigène
Taille: 150ul, Concentration: 550 µg/ml by Nanodrop;	Identification du gène (NCBI): 2876	Dilutions recommandées: WB 1:1000-1:8000
Hôte: Lapin	Nom complet: glutathione peroxidase 1	
Isotype: IgG	MW calculé: 22 kDa	
Immunogen Catalog Number: AG31101	MW observés: 22 kDa	

Applications

Applications testées: WB, ELISA	Contrôles positifs: WB : cellules HEK-293, cellules SMMC-7721, cellules THP-1, tissu rénal de rat, tissu rénal de souris
Demandes citées: WB	
Spécificité de l'espèce: Humain, rat, souris	
Espèces citées: Humain, porc, rat, souris	

Informations générales

Gpx protein, known as selenoprotein, consists selenium in its catalytic site. Gpx1 is an abundant isoform, which involves in scavenging endogenous ROS using electron provided by reduced glutathione and ubiquitously expressed the cytoplasm and mitochondria of all cell types. (PMID: 30632027)

Publications notables

Autrice	Pubmed ID	Journal	Application
Jiayu Li	36296678	Molecules	WB
Yanan Chen	36225099	J Agric Food Chem	WB
Pei Qian	35745637	Pharmaceuticals (Basel)	WB

Stockage

Stockage:
Stocker à -20°C. Stable pendant un an après l'expédition.
Tampon de stockage:
PBS avec azoture de sodium à 0,02 % et glycérol à 50 % pH 7,3
L'aliquotage n'est pas nécessaire pour le stockage à -20C

*** Les 20ul contiennent 0,1% de BSA.

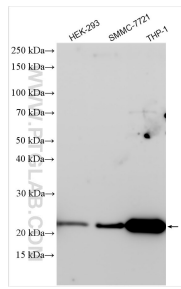
For technical support and original validation data for this product please contact:

T: 1 (888) 4PTGLAB (1-888-478-4522) (toll free in USA), or 1(312) 455-8498 (outside USA)

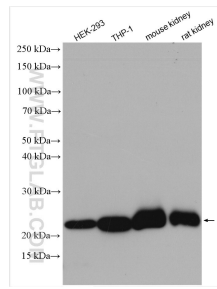
E: proteintech@ptglab.com
W: ptglab.com

This product is exclusively available under Proteintech Group brand and is not available to purchase from any other manufacturer.

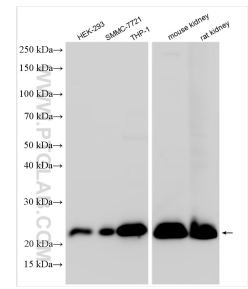
Données de validation sélectionnées



Various lysates were subjected to SDS PAGE followed by western blot with 29329-1-AP (GPX1 antibody) at dilution of 1:5000 incubated at room temperature for 1.5 hours.



Various lysates were subjected to SDS PAGE followed by western blot with 29329-1-AP (GPX1 antibody) at dilution of 1:4000 incubated at room temperature for 1.5 hours.



Various lysates were subjected to SDS PAGE followed by western blot with 29329-1-AP (GPX1 antibody) at dilution of 1:5000 incubated at room temperature for 1.5 hours.