

À des fins de recherche uniquement

Anticorps Polyclonal de lapin anti-Cannabinoid receptor 2



Numéro de catalogue: 29371-1-AP

Informations de base

Numéro de catalogue: 29371-1-AP	Numéro d'acquisition GenBank: BC074767	Méthode de purification: Purification par affinité contre l'antigène
Taille: 150ul , Concentration: 600 µg/ml by Nanodrop;	Identification du gène (NCBI): 1269	Dilutions recommandées: WB 1:500-1:2000
Hôte: Lapin	Nom complet: cannabinoid receptor 2 (macrophage)	
Isotype: IgG	MW calculé: 360 aa, 40 kDa	
Immunogen Catalog Number: AG30609	MW observés: 60 kDa	

Applications

Applications testées: WB, ELISA	Contrôles positifs: WB : cellules MCF-7,
Spécificité de l'espèce: Humain	

Informations générales

Cannabinoid receptor 1 (CNR1, or CB1) and CNR2 (CB2) are members of the guanine-nucleotide-binding protein (G-protein) coupled receptor family. The CB1 receptor is expressed mainly in the brain. The CB2 receptor is expressed mainly in the immune system and in hematopoietic cells. The two receptors have been found to be involved in the cannabinoid-induced CNS effects (including alterations in mood and cognition) experienced by users of marijuana.

Stockage

Stockage:
Stocker à -20 °C
Tampon de stockage:
PBS avec azoture de sodium à 0,02 % et glycérol à 50 % pH 7,3
L'aliquotage n'est pas nécessaire pour le stockage à -20C

*** Les 20ul contiennent 0,1% de BSA.

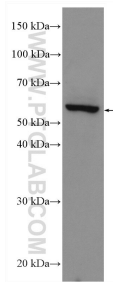
For technical support and original validation data for this product please contact:

T: 1 (888) 4PTGLAB (1-888-478-4522) (toll free in USA), or 1(312) 455-8498 (outside USA)

E: proteintech@ptglab.com
W: ptglab.com

This product is exclusively available under Proteintech Group brand and is not available to purchase from any other manufacturer.

Données de validation sélectionnées



MCF-7 cells were subjected to SDS PAGE followed by western blot with 29371-1-AP (Cannabinoid receptor 2 antibody) at dilution of 1:1000 incubated at room temperature for 1.5 hours.