

À des fins de recherche uniquement

# Anticorps Polyclonal de lapin anti-SLC6A19



Numéro de catalogue: 29372-1-AP

## Informations de base

<b>Numéro de catalogue:</b> 29372-1-AP	<b>Numéro d'acquisition GenBank:</b> BC148801	<b>Méthode de purification:</b> Purification par affinité contre l'antigène
<b>Taille:</b> 150ul , Concentration: 700 µg/ml by Nanodrop;	<b>Identification du gène (NCBI):</b> 340024	<b>Dilutions recommandées:</b> WB 1:500-1:2000 IHC 1:50-1:500
<b>Hôte:</b> Lapin	<b>Nom complet:</b> solute carrier family 6 (neutral amino acid transporter), member 19	
<b>Isotype:</b> IgG	<b>MW calculé:</b> 634 aa, 71 kDa	
<b>Immunogen Catalog Number:</b> AG31076	<b>MW observés:</b> 71 kDa	

## Applications

**Applications testées:**  
IHC, WB, ELISA

**Spécificité de l'espèce:**  
Humain, rat, souris

**Remarque-IHC: il est suggéré de démasquer l'antigène avec un tampon de TE buffer pH 9,0; (\*) À défaut, 'le démasquage de l'antigène peut être effectué avec un tampon citrate pH 6,0.**

**Contrôles positifs:**

WB : tissu rénal de souris, cellules HeLa, rein de rat

IHC : tissu rénal humain, tissu d'intestin grêle humain

## Informations générales

SLC6A19, also named as BOAT1, encodes system B(0) transmembrane protein that mediates epithelial resorption of neutral amino acids across the apical membrane in kidney and intestine (PubMed: 15044460). The protein contains 634 amino acids and has 12 predicted transmembrane regions with highly expression in human kidney and small intestine and minimal in pancreas (PubMed: 15286787). The expression of SLC6A19 in intestinal cells depends on angiotensin converting enzyme 2 which is the cellular receptor for SARS-CoV-2 (PubMed: 32132184). Mutations in SLC6A19 cause Hartnup disease (PMID: 15286787, PMID: 15286788).

## Stockage

**Stockage:**

Stocker à -20°C. Stable pendant un an après l'expédition.

**Tampon de stockage:**

PBS avec azoture de sodium à 0,02 % et glycérol à 50 % pH 7,3

L'aliquotage n'est pas nécessaire pour le stockage à -20C

\*\*\* Les 20ul contiennent 0,1% de BSA.

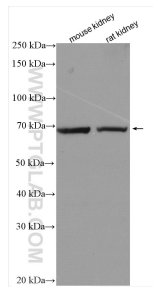
For technical support and original validation data for this product please contact:

T: 1 (888) 4PTGLAB (1-888-478-4522) (toll free in USA), or 1(312) 455-8498 (outside USA)

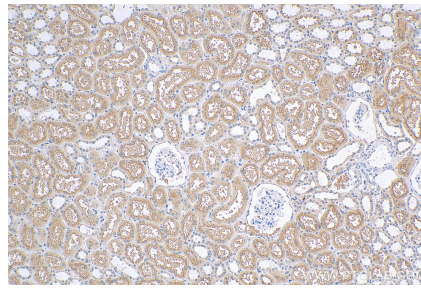
E: proteintech@ptglab.com  
W: ptglab.com

This product is exclusively available under Proteintech Group brand and is not available to purchase from any other manufacturer.

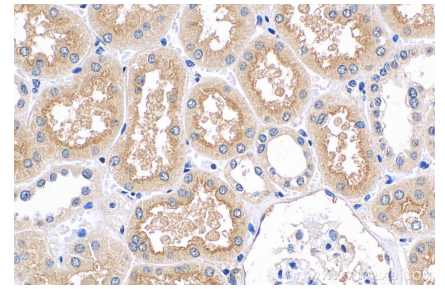
## Données de validation sélectionnées



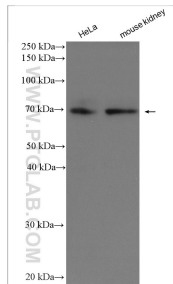
Various lysates were subjected to SDS PAGE followed by western blot with 29372-1-AP (SLC6A19 antibody) at dilution of 1:1000 incubated at room temperature for 1.5 hours.



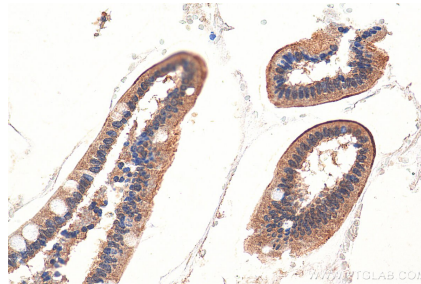
Immunohistochemical analysis of paraffin-embedded human kidney tissue slide using 29372-1-AP (SLC6A19 antibody) at dilution of 1:200 (under 10x lens). Heat mediated antigen retrieval with Tris-EDTA buffer (pH 9.0).



Immunohistochemical analysis of paraffin-embedded human kidney tissue slide using 29372-1-AP (SLC6A19 antibody) at dilution of 1:200 (under 40x lens). Heat mediated antigen retrieval with Tris-EDTA buffer (pH 9.0).



Various lysates were subjected to SDS PAGE followed by western blot with 29372-1-AP (SLC6A19 antibody) at dilution of 1:2000 incubated at room temperature for 1.5 hours.



Immunohistochemical analysis of paraffin-embedded human small intestine tissue slide using 29372-1-AP (SLC6A19 antibody) at dilution of 1:200 (under 40x lens).