

À des fins de recherche uniquement

Anticorps Polyclonal de lapin anti-DPP4/CD26



Numéro de catalogue: 29403-1-AP

2 Publications

Informations de base

Numéro de catalogue:

29403-1-AP

Taille:

150ul, Concentration: 500 µg/ml by Nanodrop;

Hôte:

Lapin

Isotype:

IgG

Immunogen Catalog Number:

AG30160

Numéro d'acquisition GenBank:

BC013329

Identification du gène (NCBI):

1803

Nom complet:

dipeptidyl-peptidase 4

MW calculé

88 kDa

MW observés:

110 kDa

Méthode de purification:

Purification par affinité contre l'antigène

Dilutions recommandées:

WB 1:500-1:2000

Applications

Applications testées:

FC, WB, ELISA

Demandes citées:

WB

Spécificité de l'espèce:

Humain

Espèces citées:

Humain, souris

Contrôles positifs:

WB : cellules Caco-2, cellules HT-29

Informations générales

CD26, also known as DPP4 (dipeptidyl peptidase-4), is a 110 kDa type II cell-surface glycoprotein widely expressed on T cells, activated B cells, activated NK cells and myeloid cells as well as on epithelial cells, fibroblasts, mesothelium, and endothelial cells of a variety of tissues (PMID:33777580; 26919392). It has ecto-enzyme activity in its extracellular domain and cleaves amino-terminal dipeptides with either L-proline or L-alanine at the penultimate position (PMID: 9553764). CD26 plays roles in diverse biological processes such as immunoregulation, glucose homeostasis, and tumorigenesis (PMID: 33777580). In addition to the 110 kDa monomeric form, a 290 kDa active dimeric form and a 60 kDa fragment of CD26 have also been reported (PMID: 9654125; 7905271).

Publications notables

Autrice	Pubmed ID	Journal	Application
Qiyu Gong	27444320	Anal Chem	WB
Kris Genelyn Dimasuay	37287831	Front Allergy	WB

Stockage

Stockage:

Stocker à -20°C. Stable pendant un an après l'expédition.

Tampon de stockage:

PBS avec azoture de sodium à 0,02 % et glycérol à 50 % pH 7,3

L'aliquotage n'est pas nécessaire pour le stockage à -20C

*** Les 20ul contiennent 0,1% de BSA.

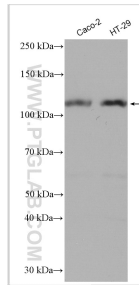
For technical support and original validation data for this product please contact:

T: 1 (888) 4PTGLAB (1-888-478-4522) (toll free in USA), or 1(312) 455-8498 (outside USA)

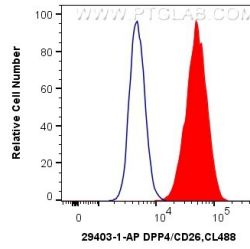
E: proteintech@ptglab.com
W: ptglab.com

This product is exclusively available under Proteintech Group brand and is not available to purchase from any other manufacturer.

Données de validation sélectionnées



Various lysates were subjected to SDS PAGE followed by western blot with 29403-1-AP (DPP4 antibody) at dilution of 1:1000 incubated at room temperature for 1.5 hours.



1×10^6 HT-29 cells were intracellularly stained with 0.4 μ g Anti-Human DPP4/CD26 (29403-1-AP) and CoraLite®488-Conjugated AffiniPure Goat Anti-Rabbit IgG(H+L) at dilution 1:1000 (red), or 0.4 μ g Control Antibody. Cells were fixed with 4% PFA and permeabilized with Flow Cytometry Perm Buffer (PF00011-C).