

À des fins de recherche uniquement

# Anticorps Polyclonal de lapin anti-PPP1R3C



Numéro de catalogue: 29424-1-AP

## Informations de base

<b>Numéro de catalogue:</b> 29424-1-AP	<b>Numéro d'acquisition GenBank:</b> BC012625	<b>Méthode de purification:</b> Purification par affinité contre l'antigène
<b>Taille:</b> 150ul , Concentration: 650 µg/ml by Nanodrop;	<b>Identification du gène (NCBI):</b> 5507	<b>Dilutions recommandées:</b> WB 1:1000-1:4000 IHC 1:50-1:500
<b>Hôte:</b> Lapin	<b>Nom complet:</b> protein phosphatase 1, regulatory (inhibitor) subunit 3C	
<b>Isotype:</b> IgG	<b>MW calculé</b> 317 aa, 36 kDa	
<b>Immunogen Catalog Number:</b> AG30280		

## Applications

**Applications testées:**  
IHC, WB, ELISA

**Spécificité de l'espèce:**  
Humain, rat, souris

**Remarque-IHC: il est suggéré de démasquer l'antigène avec un tampon de TE buffer pH 9,0; (\*) À défaut, 'le démasquage de l'antigène peut être effectué avec un tampon citrate pH 6,0.**

**Contrôles positifs:**

**WB :** cellules HEK-293T, tissu de cervelet de rat, tissu de cervelet de souris

**IHC :** tissu de cancer du côlon humain,

## Informations générales

• Protein phosphatase 1 regulatory subunit 3C (PPP1R3C) is an enzyme that binds to protein phosphatase-1 (PP1) as a regulator. The central role of PPP1R3C is associated with glycogenesis and the overexpression of this gene increases glycogen storage. The cellular glycogen level is suppressed when PPP1R3C is knocked-down. PPP1R3C induces glycogen accumulation via HIF1  $\alpha$  during hypoxia and it is hypermethylated in melanoma (PMID: 25846879). Overexpression of PPP1R3C increased hepatic gluconeogenesis in vitro and in vivo while knockdown of PPP1R3C showed an opposite result (PMID: 31181215).

## Stockage

**Stockage:**  
Stocker à -20 °C  
**Tampon de stockage:**  
PBS avec azoture de sodium à 0,02 % et glycérol à 50 % pH 7,3  
L'aliquotage n'est pas nécessaire pour le stockage à -20C

**\*\*\* Les 20ul contiennent 0,1% de BSA.**

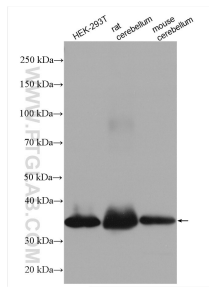
For technical support and original validation data for this product please contact:

T: 1 (888) 4PTGLAB (1-888-478-4522) (toll free in USA), or 1(312) 455-8498 (outside USA)

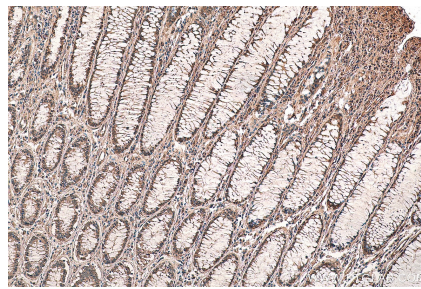
E: proteintech@ptglab.com  
W: ptglab.com

**This product is exclusively available under Proteintech Group brand and is not available to purchase from any other manufacturer.**

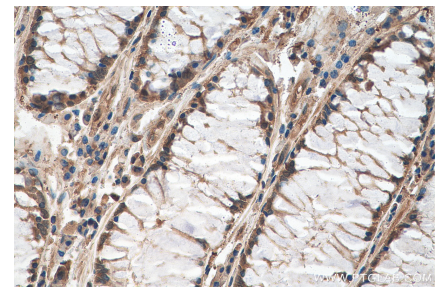
## Données de validation sélectionnées



Various lysates were subjected to SDS PAGE followed by western blot with 29424-1-AP (PPP1R3C antibody) at dilution of 1:2000 incubated at room temperature for 1.5 hours.



Immunohistochemical analysis of paraffin-embedded human colon cancer tissue slide using 29424-1-AP (PPP1R3C antibody) at dilution of 1:200 (under 10x lens). Heat mediated antigen retrieval with Tris-EDTA buffer (pH 9.0).



Immunohistochemical analysis of paraffin-embedded human colon cancer tissue slide using 29424-1-AP (PPP1R3C antibody) at dilution of 1:200 (under 40x lens). Heat mediated antigen retrieval with Tris-EDTA buffer (pH 9.0).