

À des fins de recherche uniquement

Anticorps Polyclonal de lapin anti-YTHDC1



Numéro de catalogue: 29441-1-AP

Phare

8 Publications

Informations de base

Numéro de catalogue:

29441-1-AP

Taille:

150ul, Concentration: 750 µg/ml by Nanodrop;

Hôte:

Lapin

Isotype:

IgG

Immunogen Catalog Number:

AG31459

Numéro d'acquisition GenBank:

BC053863

Identification du gène (NCBI):

91746

Nom complet:

YTH domain containing 1

MW calculé

85 kDa

MW observés:

~100 kDa

Méthode de purification:

Purification par affinité contre l'antigène

Dilutions recommandées:

WB 1:5000-1:50000

IP 0.5-4.0 µg for IP and 1:1000-1:4000 for WB

IHC 1:50-1:500

Applications

Applications testées:

IHC, IP, WB, ELISA

Demandes citées:

IHC, IP, RIP, WB

Spécificité de l'espèce:

Humain

Espèces citées:

Humain, souris

Contrôles positifs:

WB : cellules HEK-293, cellules HepG2, cellules MDA-MB-231

IP : cellules HEK-293,

IHC : tissu de cancer du côlon humain,

Remarque-IHC: il est suggéré de démasquer l'antigène avec un tampon de TE buffer pH 9,0; (*) À défaut, le démasquage de l'antigène peut être effectué avec un tampon citrate pH 6,0.

Informations générales

YTHDC1, containing 1 YTH domain, is one of the m6A-binding proteins that can recognize and bind to the m6A methylation site and plays a specific role in gene expression. YTHDC1 is constitutively enriched in the nucleus. It regulates mRNA splicing by bridging the interactions between the trans- and cis-regulatory elements to bind targeted mRNAs. YTHDC1 mediates the export of m6A modified mRNA from the nucleus to the cytoplasm by interacting with SRSF3, which is an essential factor driving the tumorigenic process in various types of cancers including breast cancer, colon cancer, ovarian cancer, osteosarcoma, and glioblastoma (32368386).

Publications notables

Autrice	Pubmed ID	Journal	Application
Kusuma Suphakhong	36183833	J Biol Chem	WB
Zhenwei Li	34825733	J Clin Lab Anal	WB
Fanhua Kong	36434140	Discov Oncol	WB

Stockage

Stockage:

Stocker à -20°C. Stable pendant un an après l'expédition.

Tampon de stockage:

PBS avec azoture de sodium à 0,02 % et glycérol à 50 % pH 7,3

L'aliquotage n'est pas nécessaire pour le stockage à -20C

*** Les 20ul contiennent 0,1% de BSA.

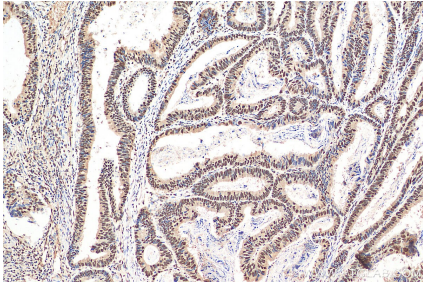
For technical support and original validation data for this product please contact:

T: 1 (888) 4PTGLAB (1-888-478-4522) (toll free in USA), or 1(312) 455-8498 (outside USA)

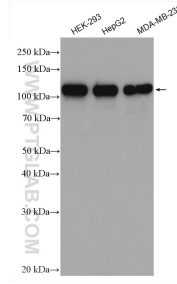
E: proteintech@ptglab.com
W: ptglab.com

This product is exclusively available under Proteintech Group brand and is not available to purchase from any other manufacturer.

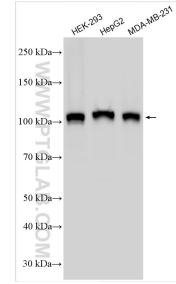
Données de validation sélectionnées



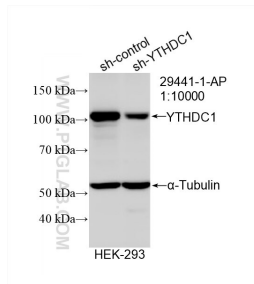
Immunohistochemical analysis of paraffin-embedded human colon cancer tissue slide using 29441-1-AP (YTHDC1 antibody) at dilution of 1:200 (under 10x lens). Heat mediated antigen retrieval with Tris-EDTA buffer (pH 9.0).



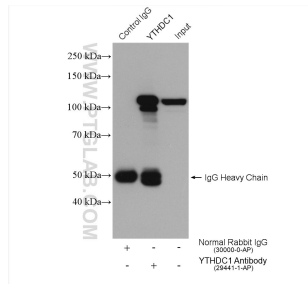
Various lysates were subjected to SDS PAGE followed by western blot with 29441-1-AP (YTHDC1 antibody) at dilution of 1:5000 incubated at room temperature for 1.5 hours.



Various lysates were subjected to SDS PAGE followed by western blot with 29441-1-AP (YTHDC1 antibody) at dilution of 1:10000 incubated at room temperature for 1.5 hours.



WB result of YTHDC1 antibody (29441-1-AP; 1:10000; incubated at room temperature for 1.5 hours) with sh-Control and sh-YTHDC1 transfected HEK-293 cells.



IP result of anti-YTHDC1 (IP: 29441-1-AP, 4ug; Detection: 29441-1-AP 1:2000) with HEK-293 cells lysate 1800 ug.