

À des fins de recherche uniquement

Anticorps Polyclonal de lapin anti-DLG2



Numéro de catalogue: 29457-1-AP

Informations de base

Numéro de catalogue: 29457-1-AP	Numéro d'acquisition GenBank: NM_001142699	Méthode de purification: Purification par affinité contre l'antigène
Taille: 150ul , Concentration: 450 µg/ml by Nanodrop;	Identification du gène (NCBI): 1740	Dilutions recommandées: WB 1:1000-1:6000
Hôte: Lapin	Nom complet: discs, large homolog 2 (Drosophila)	
Isotype: IgG	MW calculé: 98 kDa	
Immunogen Catalog Number: AG30193	MW observés: 110 kDa	

Applications

Applications testées: WB, ELISA	Contrôles positifs: WB : tissu cérébral de souris, tissu cérébral de rat
Spécificité de l'espèce: Humain, rat, souris	

Informations générales

Disks large homolog 2 (DLG2) also known as channel-associated protein of synapse-110 (chapsyn-110) or postsynaptic density protein 93 (PSD-93) is a protein encoded by the DLG2 gene. Chapsyn-110/PSD-93 is a member of the membrane-associated guanylate kinase (MAGUK) family. The protein forms a heterodimer with a related family member that may interact at postsynaptic sites to form a multimeric scaffold for the clustering of receptors, ion channels, and associated signaling proteins (PMID: 8755482 9806853).

Stockage

Stockage:
Stocker à -20°C. Stable pendant un an après l'expédition.
Tampon de stockage:
PBS avec azoture de sodium à 0,02 % et glycérol à 50 % pH 7,3
L'aliquotage n'est pas nécessaire pour le stockage à -20C

***** Les 20ul contiennent 0,1% de BSA.**

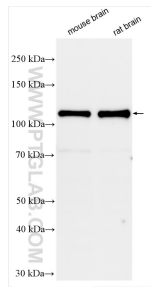
For technical support and original validation data for this product please contact:

T: 1 (888) 4PTGLAB (1-888-478-4522) (toll free in USA), or 1(312) 455-8498 (outside USA)

E: proteintech@ptglab.com
W: ptglab.com

This product is exclusively available under Proteintech Group brand and is not available to purchase from any other manufacturer.

Données de validation sélectionnées



Various lysates were subjected to SDS PAGE followed by western blot with 29457-1-AP (DLG2 antibody) at dilution of 1:3000 incubated at room temperature for 1.5 hours.