

À des fins de recherche uniquement

# Anticorps Polyclonal de lapin anti-SNF2L



Numéro de catalogue: 29461-1-AP

1 Publications

## Informations de base

Numéro de catalogue:

29461-1-AP

Taille:

150ul, Concentration: 800 µg/ml by Nanodrop;

Hôte:

Lapin

Isotype:

IgG

Immunogen Catalog Number:

AG30657

Numéro d'acquisition GenBank:

NM\_003069

Identification du gène (NCBI):

6594

Nom complet:

SWI/SNF related, matrix associated, actin dependent regulator of chromatin, subfamily a, member 1

MW calculé

123 kDa

MW observés:

120-130 kDa

Méthode de purification:

Purification par affinité contre l'antigène

Dilutions recommandées:

WB 1:2000-1:12000

## Applications

Applications testées:

WB, ELISA

Demandes citées:

WB

Spécificité de l'espèce:

Humain

Espèces citées:

Humain

Contrôles positifs:

WB : cellules MG U-87, cellules SH-SY5Y, cellules U-251

## Informations générales

SNF2L, also named as SMARCA1, NURF140 and ISWI, encodes the SWI/SNF family of proteins. The encoded protein is an ATPase which is expressed in diverse tissues and contributes to the chromatin remodeling complex that is involved in transcription (PMID: 28801535). SNF2L was shown to promote neurite outgrowth as well as regulate the human engrailed homeotic genes, important regulators of brain development (PMID: 15310751). The protein may also play a role in DNA damage, growth inhibition and apoptosis of cancer cells (PMID: 25462860). SNF2L has 2 isoforms with MW of 123 kDa and 121 kDa, and can be detected as 120-130 kDa.

## Publications notables

Autrice	Pubmed ID	Journal	Application
Ge Sun	36828916	Cell Death Differ	WB

## Stockage

Stockage:

Stocker à -20 °C.

Tampon de stockage:

PBS avec azoture de sodium à 0,02 % et glycérol à 50 % pH 7,3

L'aliquotage n'est pas nécessaire pour le stockage à -20C

\*\*\* Les 20ul contiennent 0,1% de BSA.

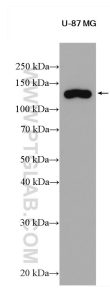
For technical support and original validation data for this product please contact:

T: 1 (888) 4PTGLAB (1-888-478-4522) (toll free in USA), or 1(312) 455-8498 (outside USA)

E: [proteintech@ptglab.com](mailto:proteintech@ptglab.com)  
W: [ptglab.com](http://ptglab.com)

This product is exclusively available under Proteintech Group brand and is not available to purchase from any other manufacturer.

## Données de validation sélectionnées



U-87 MG cells were subjected to SDS PAGE followed by western blot with 29461-1-AP (SNF2L antibody) at dilution of 1:6000 incubated at room temperature for 1.5 hours.