

À des fins de recherche uniquement

Anticorps Polyclonal de lapin anti-FOLR1



Numéro de catalogue: 29472-1-AP

Informations de base

Numéro de catalogue: 29472-1-AP	Numéro d'acquisition GenBank: BC002947	Méthode de purification: Purification par affinité contre l'antigène
Taille: 150ul , Concentration: 1000 µg/ml by Nanodrop;	Identification du gène (NCBI): 2348	Dilutions recommandées: WB 1:2000-1:10000
Hôte: Lapin	Nom complet: folate receptor 1 (adult)	
Isotype: IgG	MW calculé: 257 aa, 30 kDa	
	MW observés: 36-38 kDa	

Applications

Applications testées: WB, ELISA	Contrôles positifs: WB : cellules HeLa, tissu rénal de rat, tissu rénal de souris
Spécificité de l'espèce: Humain, rat, souris	

Informations générales

Folate receptor 1 (FOLR1), also known as folate receptor alpha or adult folate-binding protein (FBP), is a 38-kDa glycoprotein belonging to the folate receptor family (PMID:15094207; 23528302). The receptor binds to folate and reduced folic acid derivatives and mediates delivery of 5-methyltetrahydrofolate to the interior of cells. FOLR1 is a secreted protein that either anchors to membranes via a glycosyl-phosphatidylinositol linkage or exists in a soluble form. FOLR1 expression is often limited to the apical surfaces of epithelium in the lung, kidney and choroid plexus but is differentially overexpressed in a variety of solid tumors such as ovarian cancer, non-small cell lung cancer, breast cancer, kidney cancer and high-grade osteosarcoma (PMID: 23528302; 23357463).

Stockage

Stockage:
Stocker à -20 °C.
Tampon de stockage:
PBS avec azoture de sodium à 0,02 % et glycérol à 50 % pH 7,3
L'aliquotage n'est pas nécessaire pour le stockage à -20C

***** Les 20ul contiennent 0,1% de BSA**

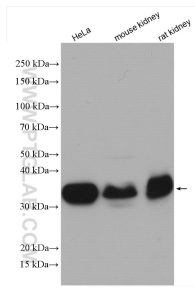
For technical support and original validation data for this product please contact:

T: 1 (888) 4PTGLAB (1-888-478-4522) (toll free in USA), or 1(312) 455-8498 (outside USA)

E: proteintech@ptglab.com
W: ptglab.com

This product is exclusively available under Proteintech Group brand and is not available to purchase from any other manufacturer.

Données de validation sélectionnées



HeLa cells were subjected to SDS PAGE followed by western blot with 29472-1-AP (FOLR1 antibody) at dilution of 1:5000 incubated at room temperature for 1.5 hours.