

À des fins de recherche uniquement

# Anticorps Polyclonal de lapin anti-GLS



Numéro de catalogue: 29519-1-AP

2 Publications

## Informations de base

Numéro de catalogue:

29519-1-AP

Taille:

150ul, Concentration: 650 µg/ml by Nanodrop;

Hôte:

Lapin

Isotype:

IgG

Immunogen Catalog Number:

AG31167

Numéro d'acquisition GenBank:

NM\_014905

Identification du gène (NCBI):

2744

Nom complet:

glutaminase

MW calculé

73 kDa

MW observés:

58 kDa, 65 kDa

Méthode de purification:

Purification par affinité contre l'antigène

Dilutions recommandées:

WB 1:1000-1:6000

## Applications

Applications testées:

WB, ELISA

Demandes citées:

WB

Spécificité de l'espèce:

Humain

Espèces citées:

Humain

Contrôles positifs:

WB : cellules COLO 320, cellules HeLa, cellules MCF-7, cellules SH-SY5Y

## Informations générales

GLS, also named as GLS1 and KIAA0838, belongs to the glutaminase family. It catalyzes the first reaction in the primary pathway for the renal catabolism of glutamine. Glutaminase-, glutamate-, and taurine-immunoreactive neurons develop neurofibrillary tangles in Alzheimer's disease(PMID:1672808).The glutaminase band in AA/C1 cells is more intense than in HT29 cells, in accordance with measurements of glutaminase activity, and had the same molecular mass of approx. 63 kDa. The bands for both cell lines are clearly different in size from both rat liver glutaminase (58 kDa) and rat kidney glutaminase (65 kDa)(PMID:12408749). It also reveals a molecular weight of 83-84 kDa as a phosphate-dependent glutaminase(PMID:447624;7512428). It has 3 isoforms named as KGA, GAM, GAC. This antibody can recognize KGA and GAC.

## Publications notables

Autrice	Pubmed ID	Journal	Application
Emily-Rose Martin	36339621	Front Pharmacol	WB
Xingyu Zhu	37007126	Front Oncol	WB

## Stockage

Stockage:

Stocker à -20 °C

Tampon de stockage:

PBS avec azoture de sodium à 0,02 % et glycérol à 50 % pH 7,3

L'aliquotage n'est pas nécessaire pour le stockage à -20C

\*\*\* Les 20ul contiennent 0,1% de BSA.

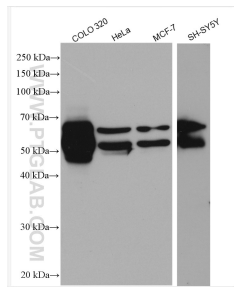
For technical support and original validation data for this product please contact:

T: 1 (888) 4PTGLAB (1-888-478-4522) (toll free in USA), or 1(312) 455-8498 (outside USA)

E: [proteintech@ptglab.com](mailto:proteintech@ptglab.com)  
W: [ptglab.com](http://ptglab.com)

This product is exclusively available under Proteintech Group brand and is not available to purchase from any other manufacturer.

## Données de validation sélectionnées



COLO 320 cells were subjected to SDS PAGE followed by western blot with 29519-1-AP (GLS antibody) at dilution of 1:3000 incubated at room temperature for 1.5 hours.