

À des fins de recherche uniquement

Anticorps Polyclonal de lapin anti-MCP1



Numéro de catalogue: 29547-1-AP

Informations de base

Numéro de catalogue: 29547-1-AP	Numéro d'acquisition GenBank: BC009716	Méthode de purification: Purification par affinité contre l'antigène
Taille: 150ul, Concentration: 800 µg/ml by Nanodrop;	Identification du gène (NCBI): 6347	Dilutions recommandées: WB 1:1000-1:4000
Hôte: Lapin	Nom complet: chemokine (C-C motif) ligand 2	
Isotype: IgG	MW calculé: 99 aa, 11 kDa	
	MW observés: 11 kDa	

Applications

Applications testées: WB, ELISA	Contrôles positifs: WB : PMA, LPS and Brefeldin A treated THP-1 cells,
Spécificité de l'espèce: Humain	

Informations générales

MCP-1, (also named as CCL2) is a member of the chemokine family. MCP-1 recruits monocytes, memory T cells, and dendritic cells to the sites of inflammation produced by either tissue injury or infection. MCP-1 has been implicated in the pathogenesis of diseases characterized by monocytic infiltrates, like psoriasis, rheumatoid arthritis and atherosclerosis. It binds to chemokine receptors CCR2 and CCR4. Elevated expression of MCP-1 is associated with severe acute respiratory syndrome coronavirus 2 infection.

Stockage

Stockage:
Stocker à -20°C. Stable pendant un an après l'expédition.
Tampon de stockage:
PBS avec azoture de sodium à 0,02 % et glycérol à 50 % pH 7,3
L'aliquotage n'est pas nécessaire pour le stockage à -20C

***** Les 20ul contiennent 0,1% de BSA.**

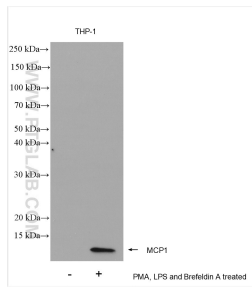
For technical support and original validation data for this product please contact:

T: 1 (888) 4PTGLAB (1-888-478-4522) (toll free in USA), or 1(312) 455-8498 (outside USA)

E: proteintech@ptglab.com
W: ptglab.com

This product is exclusively available under Proteintech Group brand and is not available to purchase from any other manufacturer.

Données de validation sélectionnées



Non-treated, and PMA, LPS and Brefeldin A treated THP-1 cells were subjected to SDS PAGE followed by western blot with 29547-1-AP (MCP1 antibody) at dilution of 1:2000 incubated at room temperature for 1.5 hours.