

À des fins de recherche uniquement

# Anticorps Polyclonal de lapin anti-Phospho-PKC Delta (Ser359)



Numéro de catalogue: 29562-1-AP

1 Publications

## Informations de base

Numéro de catalogue:

29562-1-AP

Taille:

100ul, Concentration: 300 µg/ml by Nanodrop;

Hôte:

Lapin

Isotype:

IgG

Numéro d'acquisition GenBank:

BC043350

Identification du gène (NCBI):

5580

Nom complet:

protein kinase C, delta

MW calculé

78 kDa

MW observés:

70 kDa

Méthode de purification:

Purification par affinité contre l'antigène

Dilutions recommandées:

WB 1:500-1:1000

## Applications

Applications testées:

WB, ELISA

Demandes citées:

WB

Spécificité de l'espèce:

Humain

Espèces citées:

rat, souris

Contrôles positifs:

WB: cellules Jurkat traitées à la λ phosphatase,

## Informations générales

Protein kinase C (PKC) was initially identified and characterized as a protein hydrolysis-activated kinase called protein kinase M. It has been established that PKC is a family of at least 12 serine/threonine kinases that is divided into three subfamilies: The classical PKCs ( $\alpha$ ,  $\beta$ 1,  $\beta$ 2, and  $\gamma$ ), which are activated by diacylglycerol (DAG) and calcium; the novel PKCs ( $\delta$ ,  $\epsilon$ ,  $\eta$ , and  $\theta$ ) which are activated by DAG; and the atypical PKCs ( $\zeta$  and  $\lambda$ /i), which respond to neither DAG nor calcium. PKC $\delta$ , unlike other members of the PKC family, is unique in its regulation by tyrosine phosphorylation on multiple sites that determine activation, localization, and substrate specificity. PKC $\delta$  is activated by inflammatory mediators involved in the inflammatory response including lipopolysaccharide (LPS), tumor necrosis factor (TNF) and interleukin-1 (IL-1). PKC $\delta$  activation requires multi-phosphorylation steps which triggers translocation from the cell cytosol to different subcellular compartments. (PMID: 30095599, PMID: 31323909, PMID: 30917487)

## Publications notables

Autrice	Pubmed ID	Journal	Application
Qian Jiang	37444485	Cancers (Basel)	WB

## Stockage

Stockage:

Stocker à -20°C. Stable pendant un an après l'expédition.

Tampon de stockage:

PBS avec azoture de sodium à 0,02 % et glycérol à 50 % pH 7,3

L'aliquotage n'est pas nécessaire pour le stockage à -20C

\*\*\* Les 20ul contiennent 0,1% de BSA.

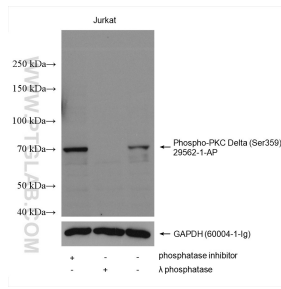
For technical support and original validation data for this product please contact:

T: 1 (888) 4PTGLAB (1-888-478-4522) (toll free in USA), or 1(312) 455-8498 (outside USA)

E: [proteintech@ptglab.com](mailto:proteintech@ptglab.com)  
W: [ptglab.com](http://ptglab.com)

This product is exclusively available under Proteintech Group brand and is not available to purchase from any other manufacturer.

## Données de validation sélectionnées



Non-treated Jurkat, phosphatase inhibitor treated and λ phosphatase treated Jurkat cells were subjected to SDS PAGE followed by western blot with 29562-1-AP (Phospho-PKC Delta (Ser359) antibody) at dilution of 1:600 incubated at room temperature for 1.5 hours. The membrane was stripped and re-blotted with GAPDH antibody as loading control.