

À des fins de recherche uniquement

# Anticorps Polyclonal de lapin anti-PLCG2



Numéro de catalogue: 29567-1-AP

## Informations de base

<b>Numéro de catalogue:</b> 29567-1-AP	<b>Numéro d'acquisition GenBank:</b> BC007565	<b>Méthode de purification:</b> Purification par affinité contre l'antigène
<b>Taille:</b> 150ul , Concentration: 1200 µg/ml by Nanodrop;	<b>Identification du gène (NCBI):</b> 5336	<b>Dilutions recommandées:</b> WB 1:500-1:2000
<b>Hôte:</b> Lapin	<b>Nom complet:</b> phospholipase C, gamma 2 (phosphatidylinositol-specific)	
<b>Isotype:</b> IgG	<b>MW calculé:</b> 148 kDa	
	<b>MW observés:</b> 148 kDa	

## Applications

<b>Applications testées:</b> WB, ELISA	<b>Contrôles positifs:</b> WB : cellules Daudi, cellules Ramos
<b>Spécificité de l'espèce:</b> Humain	

## Informations générales

Phospholipase C-gamma2 (PLCG2) is a transmembrane signaling enzyme that catalyzes the conversion of 1-phosphatidyl-1D-myo-inositol 4,5-bisphosphate to 1D-myo-inositol 1,4,5-trisphosphate (IP3) and diacylglycerol (DAG) using calcium as a cofactor. IP3 and DAG are second messenger molecules important for transmitting signals from growth factor receptors and immune system receptors across the cell membrane. Mutations in this gene have been found in autoinflammation, antibody deficiency, and immune dysregulation syndrome and familial cold autoinflammatory syndrome 3.

## Stockage

**Stockage:**  
Stocker à -20 °C  
**Tampon de stockage:**  
PBS avec azoture de sodium à 0,02 % et glycérol à 50 % pH 7,3  
L'aliquotage n'est pas nécessaire pour le stockage à -20C

**\*\*\* Les 20ul contiennent 0,1% de BSA**

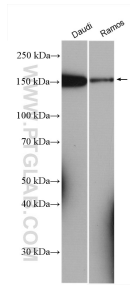
For technical support and original validation data for this product please contact:

T: 1 (888) 4PTGLAB (1-888-478-4522) (toll free in USA), or 1(312) 455-8498 (outside USA)

E: [proteintech@ptglab.com](mailto:proteintech@ptglab.com)  
W: [ptglab.com](http://ptglab.com)

**This product is exclusively available under Proteintech Group brand and is not available to purchase from any other manufacturer.**

## Données de validation sélectionnées



Various lysates were subjected to SDS PAGE followed by western blot with 29567-1-AP (PLCG2 antibody) at dilution of 1:1000 incubated at room temperature for 1.5 hours.