

À des fins de recherche uniquement

Anticorps Polyclonal de lapin anti-Phospho-INPPL1 (Tyr986/987)



Numéro de catalogue: 29574-1-AP

Informations de base

Numéro de catalogue: 29574-1-AP	Numéro d'acquisition GenBank: BC140853	Méthode de purification: Purification par affinité contre l'antigène
Taille: 100ul, Concentration: 450 µg/ml by Nanodrop;	Identification du gène (NCBI): 3636	Dilutions recommandées: WB 1:500-1:1000
Hôte: Lapin	Nom complet: inositol polyphosphate phosphatase-like 1	
Isotype: IgG	MW calculé: 1258 aa, 139 kDa	
	MW observés: 150 kDa	

Applications

Applications testées: WB, ELISA	Contrôles positifs: WB : UV treated HeLa cells, cellules HeLa, cellules NIH/3T3 traitées au UV
Spécificité de l'espèce: Humain, souris	

Informations générales

Inositol polyphosphate phosphatase-like protein 1 (INPPL1) belongs to the inositol and phosphatidylinositol 5-phosphatase family, also known as SH2 domain-containing inositol 5'-phosphatase 2 (SHIP2), is ubiquitous in all organizations. SHIP2 is constitutively tyrosine-phosphorylated in chronic myeloid leukemia progenitor cells. In B cells, SHIP2 was most tyrosine phosphorylated after BCR and FC-γ riib crosslinking and was associated with Shc, but not after BCR stimulation alone. It has also been shown that SHIP2 can be phosphorylated at Tyr-986 in COS-7 cells and Chinese hamster ovary cells overexpressing the insulin receptor. (PMID: 11349134)

Stockage

Stockage:
Stocker à -20°C. Stable pendant un an après l'expédition.
Tampon de stockage:
PBS avec azoture de sodium à 0,02 % et glycérol à 50 % pH 7,3
L'aliquotage n'est pas nécessaire pour le stockage à -20C

*** Les 20ul contiennent 0,1% de BSA.

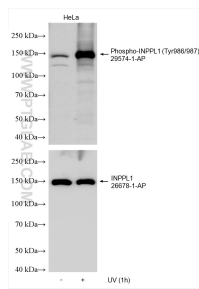
For technical support and original validation data for this product please contact:

T: 1 (888) 4PTGLAB (1-888-478-4522) (toll free in USA), or 1(312) 455-8498 (outside USA)

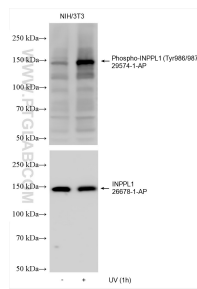
E: proteintech@ptglab.com
W: ptglab.com

This product is exclusively available under Proteintech Group brand and is not available to purchase from any other manufacturer.

Données de validation sélectionnées



Non-treated and UV treated HeLa cells were subjected to SDS PAGE followed by western blot with 29574-1-AP (Phospho-INPPL1 (Tyr986/987) antibody) at dilution of 1:500 incubated at room temperature for 1.5 hours. The membrane was stripped and re-blotted with INPPL1 antibody (26678-1-AP) subsequently.



Non-treated and UV treated NIH/3T3 cells were subjected to SDS PAGE followed by western blot with 29574-1-AP (Phospho-INPPL1 (Tyr986/987) antibody) at dilution of 1:500 incubated at room temperature for 1.5 hours. The membrane was stripped and re-blotted with INPPL1 antibody (26678-1-AP) subsequently.