

À des fins de recherche uniquement

Anticorps Polyclonal de lapin anti-Phospho-PDH E1 Alpha (Ser232)



Numéro de catalogue: 29582-1-AP

1 Publications

Informations de base

Numéro de catalogue:

29582-1-AP

Taille:

100ul, Concentration: 240 µg/ml by Nanodrop;

Hôte:

Lapin

Isotype:

IgG

Numéro d'acquisition GenBank:

BC002406

Identification du gène (NCBI):

5160

Nom complet:

pyruvate dehydrogenase (lipoamide) alpha 1

MW calculé

43 kDa

MW observés:

40 kDa

Méthode de purification:

Purification par affinité contre l'antigène

Dilutions recommandées:

WB 1:1000-1:8000

Applications

Applications testées:

WB, ELISA

Demandes citées:

WB

Spécificité de l'espèce:

Humain

Espèces citées:

souris

Contrôles positifs:

WB : cellules HeLa, Serum-free treated HeLa cells, 10 % fetal bovine serum treated HeLa cells

Informations générales

PDH E1 Alpha (PDHA1), as the major component of PDH, can be phosphorylated and inactivated by PDHK1. PDHA1 contains three serine residues (Ser232, Ser293, or Ser300) that can be reversibly phosphorylated by a dedicated family of four inhibitory pyruvate dehydrogenase kinases (PDHK1-4) and two reactivating phosphatases (PDP1, 2). Hypoxia induces the expression of PDHK1 and PDHK3 and hyperphosphorylates PDHA1. Phosphorylated PDHA1 inactivates the whole pyruvate dehydrogenase complex (PDC), reduces pyruvate entering into the tricarboxylic acid (TCA) cycle for oxidative phosphorylation, enhances the Warburg effect and promotes tumorigenesis. (PMID: 30993888, PMID: 34749809)

Publications notables

Autrice	Pubmed ID	Journal	Application
Menglong Wang	35647084	Front Cardiovasc Med	WB

Stockage

Stockage:

Stocker à -20°C. Stable pendant un an après l'expédition.

Tampon de stockage:

PBS avec azoture de sodium à 0,02 % et glycérol à 50 % pH 7,3

L'aliquotage n'est pas nécessaire pour le stockage à -20C

*** Les 20ul contiennent 0,1% de BSA.

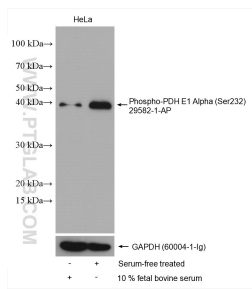
For technical support and original validation data for this product please contact:

T: 1 (888) 4PTGLAB (1-888-478-4522) (toll free in USA), or 1(312) 455-8498 (outside USA)

E: proteintech@ptglab.com
W: ptglab.com

This product is exclusively available under Proteintech Group brand and is not available to purchase from any other manufacturer.

Données de validation sélectionnées



10 % fetal bovine serum treated HeLa cells and Serum-free treated HeLa cells were subjected to SDS PAGE followed by western blot with 29582-1-AP (Phospho-PDH E1 Alpha (Ser232) antibody) at dilution of 1:4000 incubated at room temperature for 1 hours. The membrane was stripped and re-blotted with GAPDH antibody as loading control.