

À des fins de recherche uniquement

# Anticorps Polyclonal de lapin anti-BICD2



Numéro de catalogue: 29603-1-AP

## Informations de base

<b>Numéro de catalogue:</b> 29603-1-AP	<b>Numéro d'acquisition GenBank:</b> BC073970	<b>Méthode de purification:</b> Purification par affinité contre l'antigène
<b>Taille:</b> 150ul , Concentration: 500 µg/ml by Nanodrop;	<b>Identification du gène (NCBI):</b> 23299	<b>Dilutions recommandées:</b> WB 1:1000-1:4000
<b>Hôte:</b> Lapin	<b>Nom complet:</b> bicaudal D homolog 2 (Drosophila)	
<b>Isotype:</b> IgG	<b>MW calculé:</b> 855 aa, 97 kDa	
<b>Immunogen Catalog Number:</b> AG31279	<b>MW observés:</b> 93-96 kDa	

## Applications

<b>Applications testées:</b> WB, ELISA	<b>Contrôles positifs:</b> WB : cellules A549, cellules HeLa, cellules Jurkat, cellules K-562, cellules MCF-7
<b>Spécificité de l'espèce:</b> Humain	

## Informations générales

Protein bicaudal D homolog 2 (BICD2) acts as an adapter protein linking the dynein motor complex to various cargos and converts dynein from a non-processive to a highly processive motor in the presence of dynactin. Facilitates and stabilizes the interaction between dynein and dynactin and activates dynein processivity (the ability to move along a microtubule for a long distance without falling off the track). Facilitates the binding of RAB6A to the Golgi by stabilizing its GTP-bound form. Regulates coat complex coatamer protein I (COPI)-independent Golgi-endoplasmic reticulum transport via its interaction with RAB6A and recruitment of the dynein-dynactin motor complex (PubMed:25962623).

## Stockage

**Stockage:**  
Stocker à -20°C. Stable pendant un an après l'expédition.  
**Tampon de stockage:**  
PBS avec azoture de sodium à 0,02 % et glycérol à 50 % pH 7,3  
L'aliquotage n'est pas nécessaire pour le stockage à -20C

**\*\*\* Les 20ul contiennent 0,1% de BSA.**

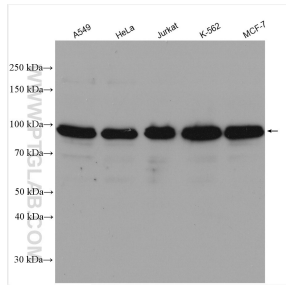
For technical support and original validation data for this product please contact:

T: 1 (888) 4PTGLAB (1-888-478-4522) (toll free in USA), or 1(312) 455-8498 (outside USA)

E: [proteintech@ptglab.com](mailto:proteintech@ptglab.com)  
W: [ptglab.com](http://ptglab.com)

**This product is exclusively available under Proteintech Group brand and is not available to purchase from any other manufacturer.**

## Données de validation sélectionnées



Various lysates were subjected to SDS PAGE followed by western blot with 29603-1-AP (BICD2 antibody) at dilution of 1:2000 incubated at room temperature for 1.5 hours.