

À des fins de recherche uniquement

Anticorps Polyclonal de lapin anti-SYNPO



Numéro de catalogue: 29662-1-AP

Informations de base

Numéro de catalogue: 29662-1-AP	Numéro d'acquisition GenBank: BC146665	Méthode de purification: Purification par affinité contre l'antigène
Taille: 150ul , Concentration: 230 µg/ml by Nanodrop;	Identification du gène (NCBI): 11346	Dilutions recommandées: WB 1:1000-1:6000 IF 1:200-1:800
Hôte: Lapin	Nom complet: synaptopodin	
Isotype: IgG	MW calculé: 929 aa, 99 kDa	
Immunogen Catalog Number: AG31287	MW observés: 44 kDa, 74-100 kDa	

Applications

Applications testées: IF, WB, ELISA	Contrôles positifs: WB : tissu cérébral de souris, tissu cérébral de rat IF : cellules U2OS,
Spécificité de l'espèce: Humain, rat, souris	

Informations générales

Synaptopodin is a actin-associated protein expressed in mature dendritic spines and renal podocytes. Several isoforms of synaptopodin have been reported: the 100 kDa neural form and 110 kDa renal form. 44-45 kDa may represent the degradation product of synaptopodin. As a podocyte specific protein, synaptopodin expression level was decreased in kidney but increased in the urinary podocytes from patients with preeclampsia, indicating that synaptopodin is a useful marker for preeclampsia. (15841212, 10555072)

Stockage

Stockage:
Stocker à -20°C. Stable pendant un an après l'expédition.
Tampon de stockage:
PBS avec azoture de sodium à 0,02 % et glycérol à 50 % pH 7,3
L'aliquotage n'est pas nécessaire pour le stockage à -20C

***** Les 20ul contiennent 0,1% de BSA.**

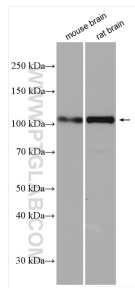
For technical support and original validation data for this product please contact:

T: 1 (888) 4PTGLAB (1-888-478-4522) (toll free in USA), or 1(312) 455-8498 (outside USA)

E: proteintech@ptglab.com
W: ptglab.com

This product is exclusively available under Proteintech Group brand and is not available to purchase from any other manufacturer.

Données de validation sélectionnées



Various lysates were subjected to SDS PAGE followed by western blot with 29662-1-AP (SYNPO antibody) at dilution of 1:3000 incubated at room temperature for 1.5 hours.

Immunofluorescent analysis of (-20°C Methanol) fixed U2OS cells using SYNPO antibody (29662-1-AP) at dilution of 1:400 and CoraLite® 488-Conjugated AffiniPure Goat Anti-Rabbit IgG(H+L).

Immunofluorescent analysis of (-20°C Methanol) fixed U2OS cells using SYNPO antibody (29662-1-AP) at dilution of 1:400 and CoraLite® 488-Conjugated AffiniPure Goat Anti-Rabbit IgG(H+L).