

À des fins de recherche uniquement

# Anticorps Polyclonal de lapin anti-Cannabinoid receptor 1



Numéro de catalogue: 29708-1-AP

## Informations de base

<b>Numéro de catalogue:</b> 29708-1-AP	<b>Numéro d'acquisition GenBank:</b> BC074812	<b>Méthode de purification:</b> Purification par affinité contre l'antigène
<b>Taille:</b> 150ul , Concentration: 450 µg/ml by Nanodrop;	<b>Identification du gène (NCBI):</b> 1268	<b>Dilutions recommandées:</b> WB 1:5000-1:50000
<b>Hôte:</b> Lapin	<b>Nom complet:</b> cannabinoid receptor 1 (brain)	
<b>Isotype:</b> IgG	<b>MW calculé</b> 472 aa, 53 kDa	
<b>Immunogen Catalog Number:</b> AG31838	<b>MW observés:</b> 48 kDa, 66 kDa	

## Applications

<b>Applications testées:</b> WB, ELISA	<b>Contrôles positifs:</b>
<b>Spécificité de l'espèce:</b> Humain, rat, souris	<b>WB :</b> tissu cérébral de souris, cellules SH-SY5Y, tissu cérébral de rat

## Informations générales

Cannabinoid receptor 1 (CNR1, or CB1) and CNR2 (CB2) are members of the guanine-nucleotide-binding protein (G-protein) coupled receptor family. The CB1 receptor is expressed mainly in the brain. The CB2 receptor is expressed mainly in the immune system and in hematopoietic cells. The two receptors have been found to be involved in the cannabinoid-induced CNS effects (including alterations in mood and cognition) experienced by users of marijuana.

## Stockage

**Stockage:**  
Stocker à -20°C. Stable pendant un an après l'expédition.  
**Tampon de stockage:**  
PBS avec azoture de sodium à 0,02 % et glycérol à 50 % pH 7,3  
L'aliquotage n'est pas nécessaire pour le stockage à -20C

**\*\*\* Les 20ul contiennent 0,1% de BSA**

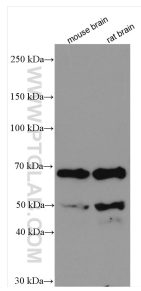
For technical support and original validation data for this product please contact:

T: 1 (888) 4PTGLAB (1-888-478-4522) (toll free in USA), or 1(312) 455-8498 (outside USA)

E: [proteintech@ptglab.com](mailto:proteintech@ptglab.com)  
W: [ptglab.com](http://ptglab.com)

**This product is exclusively available under Proteintech Group brand and is not available to purchase from any other manufacturer.**

## Données de validation sélectionnées



Various lysates were subjected to SDS PAGE followed by western blot with 29708-1-AP (Cannabinoid receptor 1 antibody) at dilution of 1:10000 incubated at room temperature for 1.5 hours.