

À des fins de recherche uniquement

Anticorps Polyclonal de lapin anti-SHH



Numéro de catalogue: 29752-1-AP

Informations de base

Numéro de catalogue: 29752-1-AP	Numéro d'acquisition GenBank: NM_000193	Méthode de purification: Purification par affinité contre l'antigène
Taille: 150ul , Concentration: 500 µg/ml by Nanodrop;	Identification du gène (NCBI): 6469	Dilutions recommandées: WB 1:500-1:3000 IHC 1:50-1:500
Hôte: Lapin	Nom complet: sonic hedgehog homolog (Drosophila)	
Isotype: IgG	MW calculé: 50 kDa	
Immunogen Catalog Number: AG31338	MW observés: 50-60 kDa	

Applications

Applications testées:

FC, IHC, WB, ELISA

Spécificité de l'espèce:

Humain, rat, souris

Remarque-IHC: il est suggéré de démasquer l'antigène avec un tampon de TE buffer pH 9,0; (*) À défaut, 'le démasquage de l'antigène peut être effectué avec un tampon citrate pH 6,0.

Contrôles positifs:

WB : cellules HeLa, cellules HepG2, cellules MCF-7, cellules MDA-MB-231, tissu hépatique de rat, tissu hépatique de souris

IHC : tissu embryonnaire de souris,

Informations générales

SHH, Sonic hedgehog protein, binds to the patched (PTCH1) receptor, which functions in association with smoothened (SMO), to activate the transcription of target genes (PMID: 10753901). In the absence of SHH, PTCH1 represses the constitutive signaling activity of SMO (PMID: 10753901). SHH is synthesized as a 45 kDa precursor that undergoes an autocatalytic processing event that produces a 19 kDa N-terminal product, responsible for all signaling activities, and a 25 kDa C-terminal fragment (PMID: 10753901, PMID: 16282375).

Stockage

Stockage:

Stocker à -20°C. Stable pendant un an après l'expédition.

Tampon de stockage:

PBS avec azoture de sodium à 0,02 % et glycérol à 50 % pH 7,3

L'aliquotage n'est pas nécessaire pour le stockage à -20C

*** Les 20ul contiennent 0,1% de BSA.

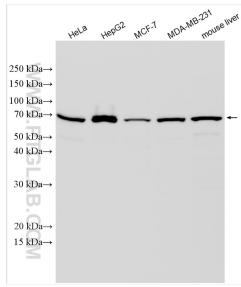
For technical support and original validation data for this product please contact:

T: 1 (888) 4PTGLAB (1-888-478-4522) (toll free in USA), or 1(312) 455-8498 (outside USA)

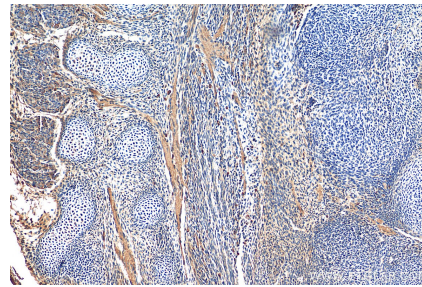
E: proteintech@ptglab.com
W: ptglab.com

This product is exclusively available under Proteintech Group brand and is not available to purchase from any other manufacturer.

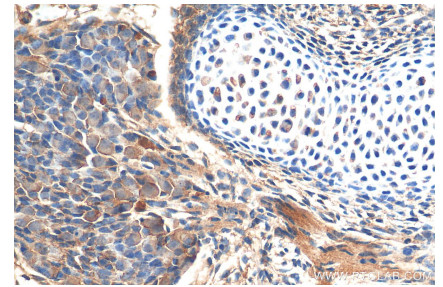
Données de validation sélectionnées



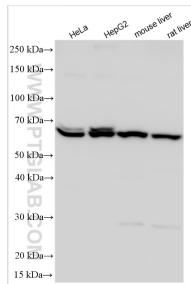
Various lysates were subjected to SDS PAGE followed by western blot with 29752-1-AP (SHH antibody) at dilution of 1:1500 incubated at room temperature for 1.5 hours.



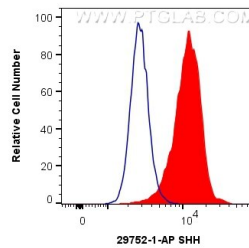
Immunohistochemical analysis of paraffin-embedded mouse embryo tissue slide using 29752-1-AP (SHH antibody) at dilution of 1:200 (under 10x lens). Heat mediated antigen retrieval with Tris-EDTA buffer (pH 9.0).



Immunohistochemical analysis of paraffin-embedded mouse embryo tissue slide using 29752-1-AP (SHH antibody) at dilution of 1:200 (under 40x lens). Heat mediated antigen retrieval with Tris-EDTA buffer (pH 9.0).



Various lysates were subjected to SDS PAGE followed by western blot with 29752-1-AP (SHH antibody) at dilution of 1:18000 incubated at room temperature for 1.5 hours.



1×10^6 HeLa cells were intracellularly stained with 0.4 ug Anti-Human SHH (29752-1-AP) and CoraLite®488-Conjugated AffiniPure Goat Anti-Rabbit IgG(H+L) at dilution 1:1000 (red), or 0.4 ug Control Antibody. Cells were fixed with 4% PFA and permeabilized with Flow Cytometry Perm Buffer (PF00011-C).