

À des fins de recherche uniquement

Anticorps Polyclonal de lapin anti-DYNC2H1



Numéro de catalogue: 29758-1-AP

Informations de base

Numéro de catalogue: 29758-1-AP	Numéro d'acquisition GenBank: NM_001377	Méthode de purification: Purification par affinité contre l'antigène
Taille: 150ul , Concentration: 550 µg/ml by Nanodrop;	Identification du gène (NCBI): 79659	Dilutions recommandées: WB 1:500-1:3000 IHC 1:50-1:500 IF 1:200-1:800
Hôte: Lapin	Nom complet: dynein, cytoplasmic 2, heavy chain 1	
Isotype: IgG	MW calculé: 493 kDa	
Immunogen Catalog Number: AG30707	MW observés: 493 kDa	

Applications

Applications testées:
IF, IHC, WB, ELISA

Spécificité de l'espèce:
Humain, souris

Remarque-IHC: il est suggéré de démasquer l'antigène avec un tampon de TE buffer pH 9,0; (*) À défaut, 'le démasquage de l'antigène peut être effectué avec un tampon citrate pH 6,0.

Contrôles positifs:

WB : tissu testiculaire de souris,

IHC : tissu rénal de souris,

IF : cellules hTERT-RPE1,

Informations générales

DYNC2H1 (Cytoplasmic dynein 2 heavy chain 1) is involved in ciliary intraflagellar transport (IFT). DYNC2H1 drives retrograde transport of the IFT-A protein complex that regulates tip-to-base transport in cilia, involved in the generation and maintenance of cilia. DYNC2H1 variants or retina-predominant variants cause nonsyndromic retinal degeneration (PMID:32753734). DYNC2H1 mutations also cause asphyxiating thoracic dystrophy and short rib-polydactyly syndrome (PMID: 19442771). DYNC2H1 was localized to the basal bodies by immunofluorescence staining (PMID: 21552265, PMID: 26077881, PMID: 30320547).

Stockage

Stockage:

Stocker à -20°C. Stable pendant un an après l'expédition.

Tampon de stockage:

PBS avec azoture de sodium à 0,02 % et glycérol à 50 % pH 7,3

L'aliquotage n'est pas nécessaire pour le stockage à -20C

*** Les 20ul contiennent 0,1% de BSA.

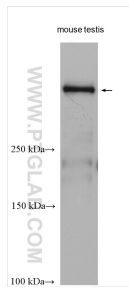
For technical support and original validation data for this product please contact:

T: 1 (888) 4PTGLAB (1-888-478-4522) (toll free in USA), or 1(312) 455-8498 (outside USA)

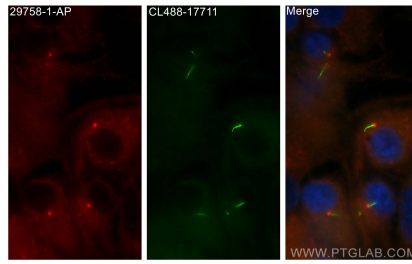
E: proteintech@ptglab.com
W: ptglab.com

This product is exclusively available under Proteintech Group brand and is not available to purchase from any other manufacturer.

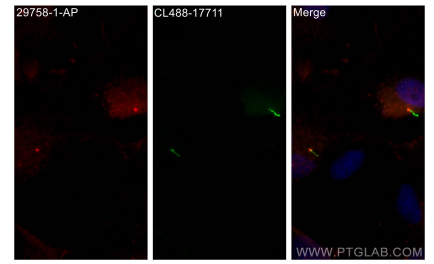
Données de validation sélectionnées



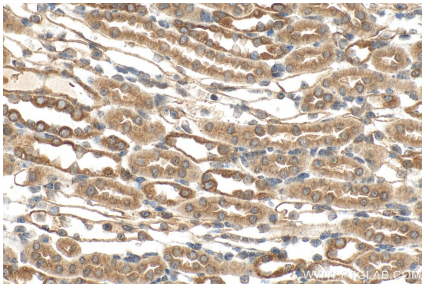
mouse testis tissue were subjected to SDS PAGE followed by western blot with 29758-1-AP (DYNC2H1 antibody) at dilution of 1:1500 incubated at room temperature for 1.5 hours.



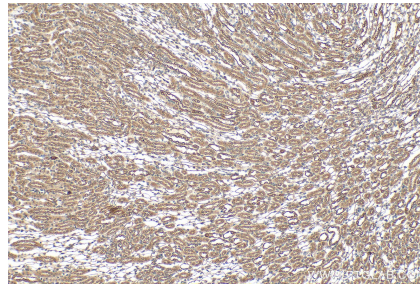
Immunofluorescent analysis of (-20°C Methanol) fixed hTERT-RPE1 cells using DYNC2H1 antibody (29758-1-AP) at dilution of 1:400 and CoraLite® 594-Conjugated AffiniPure Goat Anti-Rabbit IgG(H+L), CoraLite® Plus 488 ARL13B antibody (CL488-17711, green).



Immunofluorescent analysis of (4% PFA) fixed hTERT-RPE1 cells using DYNC2H1 antibody (29758-1-AP) at dilution of 1:400 and CoraLite® 594-Conjugated AffiniPure Goat Anti-Rabbit IgG(H+L), CoraLite® Plus 488 ARL13B antibody (CL488-17711, green).



Immunohistochemical analysis of paraffin-embedded mouse kidney tissue slide using 29758-1-AP (DYNC2H1 antibody) at dilution of 1:200 (under 40x lens). Heat mediated antigen retrieval with Tris-EDTA buffer (pH 9.0).



Immunohistochemical analysis of paraffin-embedded mouse kidney tissue slide using 29758-1-AP (DYNC2H1 antibody) at dilution of 1:200 (under 10x lens). Heat mediated antigen retrieval with Tris-EDTA buffer (pH 9.0).