

À des fins de recherche uniquement

# Anticorps Polyclonal de lapin anti-EBP50/NHERF-1



Numéro de catalogue: 29771-1-AP

## Informations de base

Numéro de catalogue:

29771-1-AP

Taille:

150ul, Concentration: 600 µg/ml by Nanodrop;

Hôte:

Lapin

Isotype:

IgG

Immunogen Catalog Number:

AG30878

Numéro d'acquisition GenBank:

NM\_004252

Identification du gène (NCBI):

9368

Nom complet:

solute carrier family 9 (sodium/hydrogen exchanger), member 3 regulator 1

MW calculé

39 kDa

MW observés:

50 kDa

Méthode de purification:

Purification par affinité contre l'antigène

Dilutions recommandées:

WB 1:5000-1:50000

IHC 1:1000-1:4000

## Applications

Applications testées:

FC, IHC, WB, ELISA

Spécificité de l'espèce:

Humain, rat, souris

**Remarque-IHC: il est suggéré de démasquer l'antigène avec un tampon de TE buffer pH 9.0; (\*) À défaut, le démasquage de l'antigène peut être effectué avec un tampon citrate pH 6,0.**

Contrôles positifs:

WB : cellules HCT 116, cellules HepG2, cellules MCF-7, cellules MDA-MB-231, tissu rénal de rat, tissu rénal de souris

IHC : tissu placentaire humain, tissu rénal de rat

## Informations générales

### Stockage

Stockage:

Stocker à -20°C. Stable pendant un an après l'expédition.

Tampon de stockage:

PBS avec azoture de sodium à 0,02 % et glycérol à 50 % pH 7,3

L'aliquotage n'est pas nécessaire pour le stockage à -20C

\*\*\* Les 20ul contiennent 0,1% de BSA.

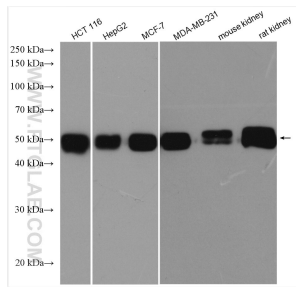
For technical support and original validation data for this product please contact:

T: 1 (888) 4PTGLAB (1-888-478-4522) (toll free in USA), or 1(312) 455-8498 (outside USA)

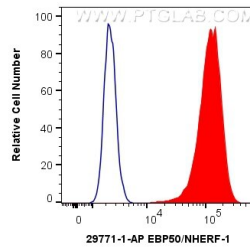
E: [proteintech@ptglab.com](mailto:proteintech@ptglab.com)  
W: [ptglab.com](http://ptglab.com)

This product is exclusively available under Proteintech Group brand and is not available to purchase from any other manufacturer.

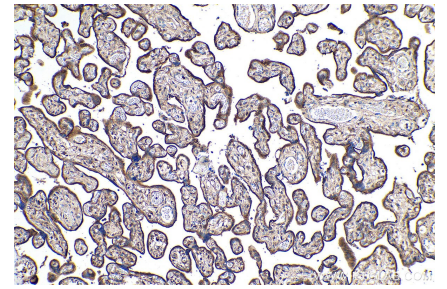
## Données de validation sélectionnées



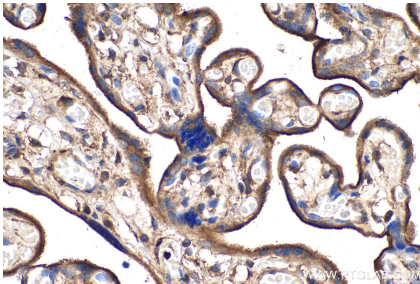
Various lysates were subjected to SDS PAGE followed by western blot with 29771-1-AP (EBP50/NHERF-1 antibody) at dilution of 1:10000 and incubated at room temperature for 1.5 hours.



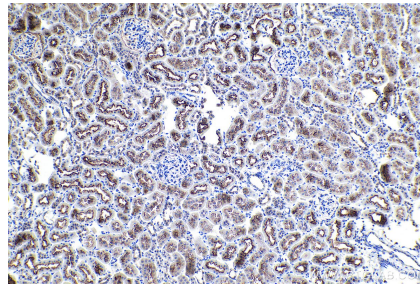
1X10<sup>6</sup> HepG2 cells were intracellularly stained with 0.4 ug Anti-HUMAN EBP50/NHERF-1 (29771-1-AP) and CoraLite®488-Conjugated AffiniPure Goat Anti-Rabbit IgG(H+L) at dilution 1:1000 (red), or 0.4 ug Control Antibody. Cells were fixed with 4% PFA and permeabilized with Flow Cytometry Perm Buffer (PF00011-C).



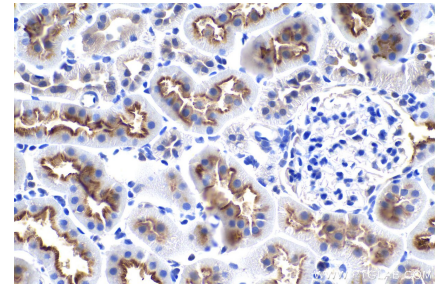
Immunohistochemical analysis of paraffin-embedded human placenta tissue slide using 29771-1-AP (EBP50/NHERF-1 antibody) at dilution of 1:2000 (under 10x lens). Heat mediated antigen retrieval with Tris-EDTA buffer (pH 9.0).



Immunohistochemical analysis of paraffin-embedded human placenta tissue slide using 29771-1-AP (EBP50/NHERF-1 antibody) at dilution of 1:2000 (under 40x lens). Heat mediated antigen retrieval with Tris-EDTA buffer (pH 9.0).



Immunohistochemical analysis of paraffin-embedded rat kidney tissue slide using 29771-1-AP (EBP50/NHERF-1 antibody) at dilution of 1:2000 (under 10x lens). Heat mediated antigen retrieval with Tris-EDTA buffer (pH 9.0).



Immunohistochemical analysis of paraffin-embedded rat kidney tissue slide using 29771-1-AP (EBP50/NHERF-1 antibody) at dilution of 1:2000 (under 40x lens). Heat mediated antigen retrieval with Tris-EDTA buffer (pH 9.0).