

À des fins de recherche uniquement

# Anticorps Polyclonal de lapin anti-RPGRIP1L



Numéro de catalogue: 29778-1-AP

2 Publications

## Informations de base

Numéro de catalogue:

29778-1-AP

Taille:

150ul, Concentration: 800 µg/ml by Nanodrop;

Hôte:

Lapin

Isotype:

IgG

Immunogen Catalog Number:

AG31168

Numéro d'acquisition GenBank:

NM\_015272

Identification du gène (NCBI):

23322

Nom complet:

RPGRIP1-like

MW calculé

151 kDa

MW observés:

151 kDa

Méthode de purification:

Purification par affinité contre l'antigène

Dilutions recommandées:

WB 1:500-1:2000

## Applications

Applications testées:

WB, ELISA

Demandes citées:

IF, WB

Spécificité de l'espèce:

Humain, rat, souris

Espèces citées:

Humain, poisson-zèbre

Contrôles positifs:

WB : cellules HeLa, cellules HEK-293, cellules Jurkat, tissu testiculaire de rat, tissu testiculaire de souris

## Informations générales

RPGRIP1L, also named as FTM, KIAA1005, belongs to the RPGRIP1 family. It negatively regulates signaling through the G-protein coupled thromboxane A2 receptor. RPGRIP1L may be involved in mechanisms like programmed cell death, craniofacial development, patterning of the limbs, and formation of the left-right axis. (PMID:17558409) Defects in RPGRIP1L are the cause of Joubert syndrome type 7 (JBTS7). Defects in RPGRIP1L are the cause of Meckel syndrome type 5 (MKS5).

## Publications notables

Autrice	Pubmed ID	Journal	Application
Jun Wang	36533556	Dis Model Mech	WB
Emma A Hall	36790165	Elife	IF

## Stockage

Stockage:

Stocker à -20 °C.

Tampon de stockage:

PBS avec azoture de sodium à 0,02 % et glycérol à 50 % pH 7,3

L'aliquotage n'est pas nécessaire pour le stockage à -20C

\*\*\* Les 20ul contiennent 0,1% de BSA.

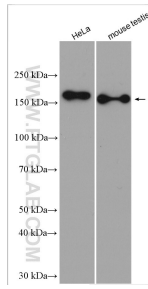
For technical support and original validation data for this product please contact:

T: 1 (888) 4PTGLAB (1-888-478-4522) (toll free in USA), or 1(312) 455-8498 (outside USA)

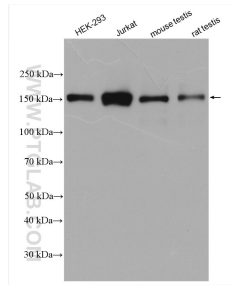
E: [proteintech@ptglab.com](mailto:proteintech@ptglab.com)  
W: [ptglab.com](http://ptglab.com)

This product is exclusively available under Proteintech Group brand and is not available to purchase from any other manufacturer.

## Données de validation sélectionnées



Various lysates were subjected to SDS PAGE followed by western blot with 29778-1-AP (RPGRIPL antibody) at dilution of 1:1000 incubated at room temperature for 1.5 hours.



Various lysates were subjected to SDS PAGE followed by western blot with 29778-1-AP (RPGRIPL antibody) at dilution of 1:2500 incubated at room temperature for 1.5 hours.