

À des fins de recherche uniquement

Anticorps Polyclonal de lapin anti-CCDC111/PRIMPOL



Numéro de catalogue: 29824-1-AP

Phare

2 Publications

Informations de base

Numéro de catalogue:

29824-1-AP

Taille:

150ul, Concentration: 650 µg/ml by Nanodrop;

Hôte:

Lapin

Isotype:

IgG

Immunogen Catalog Number:

AG31478

Numéro d'acquisition GenBank:

BC064600

Identification du gène (NCBI):

201973

Nom complet:

coiled-coil domain containing 111

MW observés:

64 kDa

Méthode de purification:

Purification par affinité contre l'antigène

Dilutions recommandées:

WB 1:1000-1:4000

IHC 1:50-1:500

IF 1:200-1:800

Applications

Applications testées:

IF, IHC, WB, ELISA

Demandes citées:

WB

Spécificité de l'espèce:

Humain

Espèces citées:

Humain

Contrôles positifs:

WB : cellules A549, cellules HEK-293, cellules HeLa, cellules HepG2, cellules Jurkat

IHC : tissu rénal humain,

IF : cellules A431,

Remarque-IHC: il est suggéré de démasquer l'antigène avec un tampon de TE buffer pH 9,0; (*) À défaut, le démasquage de l'antigène peut être effectué avec un tampon citrate pH 6,0.

Informations générales

CCDC111, also known as PRIMPOL, FLJ33167, which contains the active-site motifs of AEP primases and a putative Zn finger similar to that of herpesvirus UL52 primase and other AEP-like enzymes. CCDC111 is required to facilitate mitochondrial and nuclear replication fork progression by initiating de novo DNA synthesis using dNTPs and acting as an error-prone DNA polymerase able to bypass certain DNA lesions (PMID: 24126761, PMID: 24207056). In addition to its role in DNA damage response, also required to maintain efficient nuclear and mitochondrial DNA replication in unperturbed cells (Uniprot, PMID: 30715459).

Publications notables

Autrice	Pubmed ID	Journal	Application
Taichi Igarashi	37591859	Nat Commun	WB
Nicole L Batenburg	37569794	Int J Mol Sci	WB

Stockage

Stockage:

Stocker à -20°C. Stable pendant un an après l'expédition.

Tampon de stockage:

PBS avec azoture de sodium à 0,02 % et glycérol à 50 % pH 7,3

L'aliquotage n'est pas nécessaire pour le stockage à -20C

*** Les 20ul contiennent 0,1% de BSA.

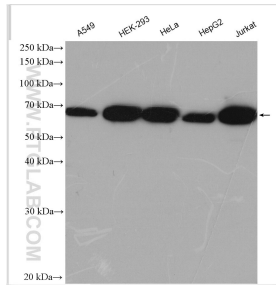
For technical support and original validation data for this product please contact:

T: 1 (888) 4PTGLAB (1-888-478-4522) (toll free in USA), or 1(312) 455-8498 (outside USA)

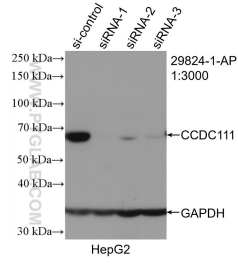
E: proteintech@ptglab.com
W: ptglab.com

This product is exclusively available under Proteintech Group brand and is not available to purchase from any other manufacturer.

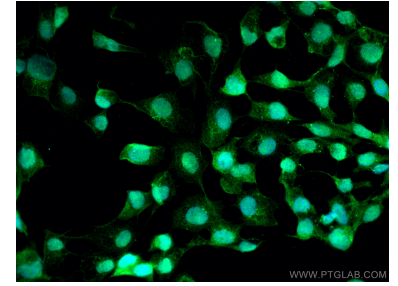
Données de validation sélectionnées



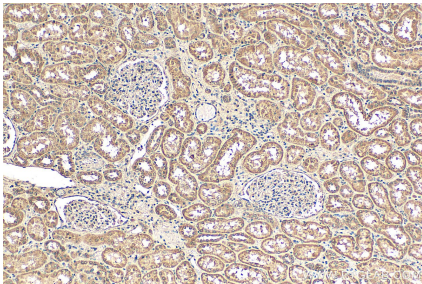
Various lysates were subjected to SDS PAGE followed by western blot with 29824-1-AP (CCDC111/PRIMPOL antibody) at dilution of 1:2000 incubated at room temperature for 1.5 hours.



WB result of CCDC111/PRIMPOL antibody (29824-1-AP; 1:3000; incubated at room temperature for 1.5 hours) with sh-Control and sh-CCDC111/PRIMPOL transfected HepG2 cells.



Immunofluorescent analysis of (4% PFA) fixed A431 cells using CCDC111 antibody (29824-1-AP) at dilution of 1:400 and CoraLite®488-Conjugated AffiniPure Goat Anti-Rabbit IgG(H+L).



Immunohistochemical analysis of paraffin-embedded human kidney tissue slide using 29824-1-AP (CCDC111/PRIMPOL antibody) at dilution of 1:200 (under 10x lens). Heat mediated antigen retrieval with Tris-EDTA buffer (pH 9.0).