

À des fins de recherche uniquement

Anticorps Polyclonal de lapin anti-ENT1



Numéro de catalogue: 29862-1-AP **Phare**

Informations de base

Numéro de catalogue: 29862-1-AP	Numéro d'acquisition GenBank: NM_001372327.1	Méthode de purification: Purification par affinité contre l'antigène
Taille: 150ul , Concentration: 500 µg/ml by Nanodrop;	Identification du gène (NCBI): 2030	Dilutions recommandées: WB 1:500-1:2000 IHC 1:50-1:500
Hôte: Lapin	Nom complet: solute carrier family 29 (nucleoside transporters), member 1	
Isotype: IgG	MW calculé: 50KD	
Immunogen Catalog Number: AG32003	MW observés: 70 kDa	

Applications

Applications testées:

IHC, WB, ELISA

Spécificité de l'espèce:

Humain, souris

Remarque-IHC: il est suggéré de démasquer l'antigène avec un tampon de TE buffer pH 9,0; (*) À défaut, 'le démasquage de l'antigène peut être effectué avec un tampon citrate pH 6,0.

Contrôles positifs:

WB : cellules HCT 116, cellules HeLa, tissu cardiaque de souris, tissu hépatique de rat, tissu hépatique de souris, tissu rénal de souris

IHC : tissu de cancer du côlon humain, tissu de lymphome humain

Informations générales

ENT1 (equilibrative nucleoside transporter 1; also known as SLC29A1) is a ubiquitous protein located at the cell membrane and is a major transporter responsible for the cellular uptake and release of endogenous nucleosides such as adenosine, and nucleoside analogs used in chemotherapy. The predicted molecular weight of ENT1 is 50 kDa, while heavier 54-68 kDa band may be observed due to the glycosylation (16448802, 11850433, 16111480). A smaller novel splice variant of the mouse ENT1 has also been identified, which generates a protein of 35-40 kDa (18413666).

Stockage

Stockage:

Stocker à -20°C. Stable pendant un an après l'expédition.

Tampon de stockage:

PBS avec azoture de sodium à 0,02 % et glycérol à 50 % pH 7,3

L'aliquotage n'est pas nécessaire pour le stockage à -20C

***** Les 20ul contiennent 0,1% de BSA.**

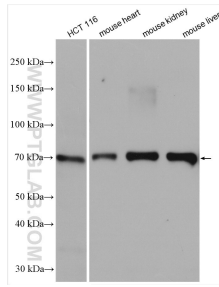
For technical support and original validation data for this product please contact:

T: 1 (888) 4PTGLAB (1-888-478-4522) (toll free in USA), or 1(312) 455-8498 (outside USA)

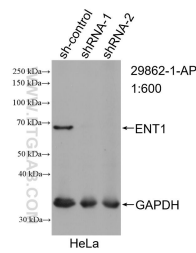
E: proteintech@ptglab.com
W: ptglab.com

This product is exclusively available under Proteintech Group brand and is not available to purchase from any other manufacturer.

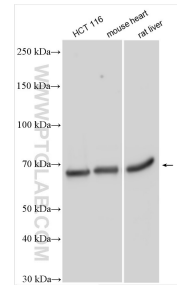
Données de validation sélectionnées



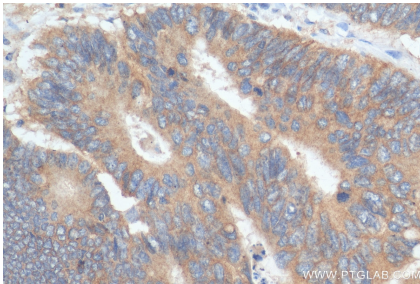
Various lysates were subjected to SDS PAGE followed by western blot with 29862-1-AP (ENT1 antibody) at dilution of 1:800 incubated at room temperature for 1.5 hours.



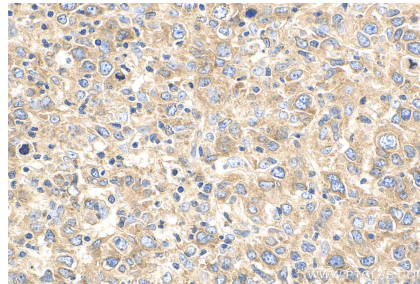
WB result of ENT1 antibody (29862-1-AP; 1:600; incubated at room temperature for 1.5 hours) with sh-Control and sh-ENT1 transfected HeLa cells.



Various lysates were subjected to SDS PAGE followed by western blot with 29862-1-AP (ENT1 antibody) at dilution of 1:1000 incubated at room temperature for 1.5 hours.



Immunohistochemical analysis of paraffin-embedded human colon cancer tissue slide using 29862-1-AP (ENT1 antibody) at dilution of 1:200 (under 40x lens). Heat mediated antigen retrieval with Tris-EDTA buffer (pH 9.0).



Immunohistochemical analysis of paraffin-embedded human lymphoma tissue slide using 29862-1-AP (ENT1 antibody) at dilution of 1:200 (under 40x lens). Heat mediated antigen retrieval with Tris-EDTA buffer (pH 9.0).