

À des fins de recherche uniquement

Anticorps Polyclonal de lapin anti-Phospho-PPP1CA (Thr320)



Numéro de catalogue: 29874-1-AP

Informations de base

Numéro de catalogue:

29874-1-AP

Taille:

100ul, Concentration: 250 µg/ml by Nanodrop;

Hôte:

Lapin

Isotype:

IgG

Numéro d'acquisition GenBank:

BC001888

Identification du gène (NCBI):

5499

Nom complet:

protein phosphatase 1, catalytic subunit, alpha isoform

MW calculé

330 aa, 38 kDa

MW observés:

37 kDa

Méthode de purification:

Purification par affinité contre l'antigène

Dilutions recommandées:

WB 1:1000-1:6000

Applications

Applications testées:

WB, ELISA

Spécificité de l'espèce:

Humain

Contrôles positifs:

WB : cellules HeLa traitées à la calyculine A, cellules Jurkat traitées à la calyculine A

Informations générales

Protein phosphatase associates with over 200 regulatory proteins to form highly specific holoenzymes which dephosphorylate hundreds of biological targets. Type 1 protein phosphatase (PP1), a serine/threonine phosphatase, is essential for cell division and participates in the regulation of glycogen metabolism, muscle contractility, and protein synthesis. Four isoforms of PP1 have been characterized: PP1 α , PP1 δ , PP1 γ 1 and PP1 γ 2 (PMID: 9835651). It has been illustrated that PP1 dephosphorylates Rb and cdc25 during mitosis (PMID: 8384581, PMID: 1392080). A cell cycle-dependent phosphorylation at Thr320 of PP1 α by cdc2 kinase inhibits PP1 α activity (PMID: 9122166).

Stockage

Stockage:

Stocker à -20°C. Stable pendant un an après l'expédition.

Tampon de stockage:

PBS avec azoture de sodium à 0,02 % et glycérol à 50 % pH 7,3

L'aliquotage n'est pas nécessaire pour le stockage à -20C

*** Les 20ul contiennent 0,1% de BSA.

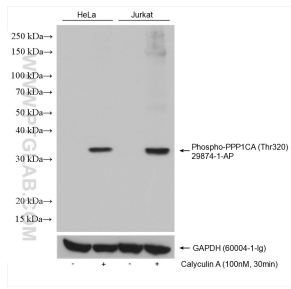
For technical support and original validation data for this product please contact:

T: 1 (888) 4PTGLAB (1-888-478-4522) (toll free in USA), or 1(312) 455-8498 (outside USA)

E: proteintech@ptglab.com
W: ptglab.com

This product is exclusively available under Proteintech Group brand and is not available to purchase from any other manufacturer.

Données de validation sélectionnées



Non-treated and Calyculin A treated various cells were subjected to SDS PAGE followed by western blot with 29874-1-AP (Phospho-PPP1CA (Thr320) antibody) at dilution of 1:3000 incubated at room temperature for 1.5 hours. The membrane was stripped and re-blotted with GAPDH antibody as the loading control.