

À des fins de recherche uniquement

# Anticorps Polyclonal de lapin anti-AP2A1



Numéro de catalogue: 29887-1-AP

## Informations de base

<b>Numéro de catalogue:</b> 29887-1-AP	<b>Numéro d'acquisition GenBank:</b> NM_014203	<b>Méthode de purification:</b> Purification par affinité contre l'antigène
<b>Taille:</b> 150ul , Concentration: 700 µg/ml by Nanodrop;	<b>Identification du gène (NCBI):</b> 160	<b>Dilutions recommandées:</b> WB 1:2000-1:10000 IHC 1:250-1:1000 IF 1:200-1:800
<b>Hôte:</b> Lapin	<b>Nom complet:</b> adaptor-related protein complex 2, alpha 1 subunit	
<b>Isotype:</b> IgG	<b>MW calculé</b> 108KD	
<b>Immunogen Catalog Number:</b> AG31809	<b>MW observés:</b> 100-108 kDa	

## Applications

### Applications testées:

IF, IHC, WB, ELISA

### Spécificité de l'espèce:

Humain, souris

**Remarque-IHC: il est suggéré de démasquer l'antigène avec un tampon de TE buffer pH 9,0; (\*) À défaut, 'le démasquage de l'antigène peut être effectué avec un tampon citrate pH 6,0.**

### Contrôles positifs:

**WB :** cellules HEK-293, cellules SH-SY5Y, tissu cardiaque de souris

**IHC :** tissu de tumeur ovarienne humain,

**IF :** cellules SH-SY5Y, cellules HeLa

## Informations générales

AP2A1 encode adaptor protein complex 2 (AP-2) subunit alpha-1, which is a 100 kDa coated vesicle protein. Adaptor protein (AP) complexes are cytosolic heterotetramers that mediate the sorting of membrane proteins in the secretory and endocytic pathways. AP complexes are involved in the formation of clathrin-coated vesicles (CCVs) by recruiting the scaffold protein, clathrin. AP complexes also play a pivotal role in the cargo selection by recognizing the sorting signals within the cytoplasmic tail of integral membrane proteins. AP-2 is involved in clathrin-dependent endocytosis.

## Stockage

### Stockage:

Stocker à -20 °C

### Tampon de stockage:

PBS avec azoture de sodium à 0,02 % et glycérol à 50 % pH 7,3

L'aliquotage n'est pas nécessaire pour le stockage à -20C

**\*\*\* Les 20ul contiennent 0,1% de BSA.**

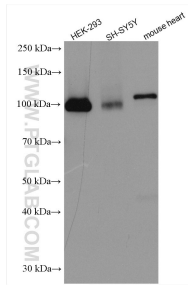
For technical support and original validation data for this product please contact:

T: 1 (888) 4PTGLAB (1-888-478-4522) (toll free in USA), or 1(312) 455-8498 (outside USA)

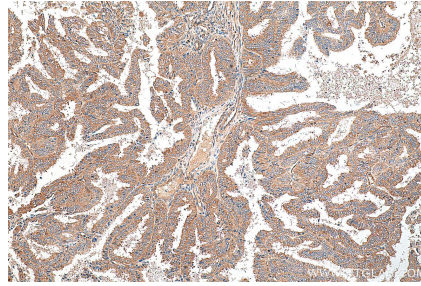
E: [proteintech@ptglab.com](mailto:proteintech@ptglab.com)  
W: [ptglab.com](http://ptglab.com)

**This product is exclusively available under Proteintech Group brand and is not available to purchase from any other manufacturer.**

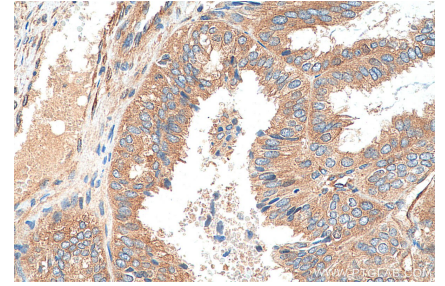
## Données de validation sélectionnées



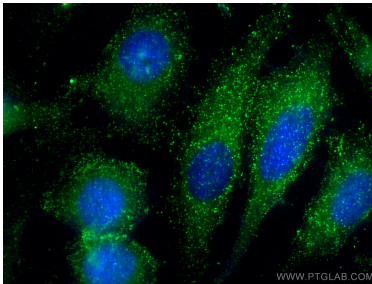
Various lysates were subjected to SDS PAGE followed by western blot with 29887-1-AP (AP2A1 antibody) at dilution of 1:5000 incubated at room temperature for 1.5 hours.



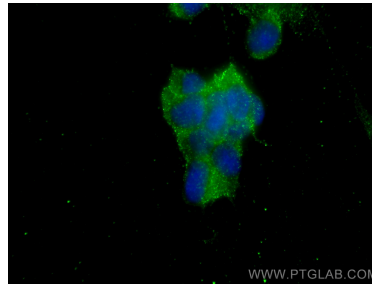
Immunohistochemical analysis of paraffin-embedded human ovary tumor tissue slide using 29887-1-AP (AP2A1 antibody) at dilution of 1:500 (under 10x lens). Heat mediated antigen retrieval with Tris-EDTA buffer (pH 9.0).



Immunohistochemical analysis of paraffin-embedded human ovary tumor tissue slide using 29887-1-AP (AP2A1 antibody) at dilution of 1:500 (under 40x lens). Heat mediated antigen retrieval with Tris-EDTA buffer (pH 9.0).



Immunofluorescent analysis of (-20°C Methanol) fixed HeLa cells using AP2A1 antibody (29887-1-AP) at dilution of 1:400 and CoraLite@488-Conjugated AffiniPure Goat Anti-Rabbit IgG(H+L).



Immunofluorescent analysis of (-20°C Ethanol) fixed SH-SY5Y cells using AP2A1 antibody (29887-1-AP) at dilution of 1:400 and CoraLite@488-Conjugated AffiniPure Goat Anti-Rabbit IgG(H+L).