

À des fins de recherche uniquement

# Anticorps Polyclonal de lapin anti-CRELD1



Numéro de catalogue: 29903-1-AP

## Informations de base

Numéro de catalogue: 29903-1-AP	Numéro d'acquisition GenBank: NM_001031717	Méthode de purification: Purification par affinité contre l'antigène
Taille: 150ul, Concentration: 1400 µg/ml by Nanodrop;	Identification du gène (NCBI): 78987	Dilutions recommandées: WB 1:1000-1:6000 IHC 1:50-1:500 IF 1:200-1:800
Hôte: Lapin	Nom complet: cysteine-rich with EGF-like domains 1	
Isotype: IgG	MW calculé: 45KD	
Immunogen Catalog Number: AG31593	MW observés: 45 kDa, 70-75 kDa	

## Applications

Applications testées:  
IF, IHC, WB, ELISA

Spécificité de l'espèce:  
Humain, rat, souris

**Remarque-IHC: il est suggéré de démasquer l'antigène avec un tampon de TE buffer pH 9,0; (\*) À défaut, 'le démasquage de l'antigène peut être effectué avec un tampon citrate pH 6,0.**

Contrôles positifs:

WB : cellules HepG2, tissu pulmonaire de rat, tissu pulmonaire de souris

IHC : tissu cardiaque de souris,

IF : cellules U2OS,

## Informations générales

CRELD1 (Cysteine-rich with EGF-like domain protein 1) belongs to matricellular proteins family. The encoded protein has a cysteine-rich with epidermal growth factor-like domain (PubMed: 12137942). Mutations in CRELD1 are the cause of atrioventricular septal defect (PubMed: 24697899). Alternate splicing results in multiple transcript variants. CRELD1 can be detected as 70-75 kDa in mouse lung (PMID: 24697899).

## Stockage

Stockage:

Stocker à -20°C. Stable pendant un an après l'expédition.

Tampon de stockage:

PBS avec azoture de sodium à 0,02 % et glycérol à 50 % pH 7,3

L'aliquotage n'est pas nécessaire pour le stockage à -20C

\*\*\* Les 20ul contiennent 0,1% de BSA.

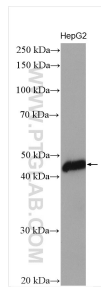
For technical support and original validation data for this product please contact:

T: 1 (888) 4PTGLAB (1-888-478-4522) (toll free in USA), or 1(312) 455-8498 (outside USA)

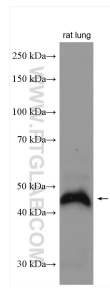
E: [proteintech@ptglab.com](mailto:proteintech@ptglab.com)  
W: [ptglab.com](http://ptglab.com)

This product is exclusively available under Proteintech Group brand and is not available to purchase from any other manufacturer.

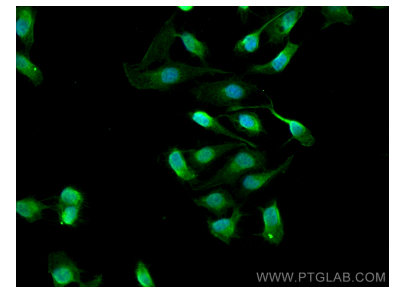
## Données de validation sélectionnées



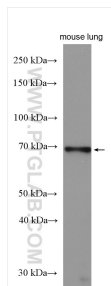
HepG2 cells were subjected to SDS PAGE followed by western blot with 29903-1-AP (CRELD1 antibody) at dilution of 1:3000 incubated at room temperature for 1.5 hours.



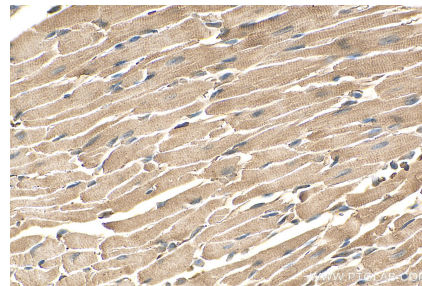
rat lung tissue were subjected to SDS PAGE followed by western blot with 29903-1-AP (CRELD1 antibody) at dilution of 1:2000 incubated at room temperature for 1.5 hours.



Immunofluorescent analysis of (4% PFA) fixed U2OS cells using CRELD1 antibody (29903-1-AP) at dilution of 1:400 and CoraLite®488-Conjugated AffiniPure Goat Anti-Rabbit IgG(H+L).



mouse lung tissue were subjected to SDS PAGE followed by western blot with 29903-1-AP (CRELD1 antibody) at dilution of 1:2000 incubated at room temperature for 1.5 hours.



Immunohistochemical analysis of paraffin-embedded mouse heart tissue slide using 29903-1-AP (CRELD1 antibody) at dilution of 1:200 (under 40x lens). Heat mediated antigen retrieval with Tris-EDTA buffer (pH 9.0).