

À des fins de recherche uniquement

Anticorps Polyclonal de lapin anti-POLL



Numéro de catalogue: 29920-1-AP

Informations de base

Numéro de catalogue: 29920-1-AP	Numéro d'acquisition GenBank: BC068529	Méthode de purification: Purification par affinité contre l'antigène
Taille: 150ul , Concentration: 900 µg/ml by Nanodrop;	Identification du gène (NCBI): 27343	Dilutions recommandées: WB 1:1000-1:5000
Hôte: Lapin	Nom complet: polymerase (DNA directed), lambda	
Isotype: IgG	MW calculé: 63 kDa	
Immunogen Catalog Number: AG31995	MW observés: 63-70 kDa	

Applications

Applications testées: WB, ELISA	Contrôles positifs: WB : cellules L02, cellules HEK-293, cellules HEK-293T, cellules HepG2
Spécificité de l'espèce: Humain	

Informations générales

POLL (DNA polymerase lambda) functions in DNA repair (PMID: 11457865, PMID: 19806195, PMID: 20693240, PMID: 30250067). POLL has 5-prime-deoxyribose-5-phosphate lyase activity and strand-displacement synthesis activity on gapped DNA substrates, indicating that POLL participates in short- and long-patch base excision repair. POLL is involved in base excision repair (BER) responsible for repair of lesions that give rise to abasic (AP) sites in DNA (PMID: 11457865, PMID: 19806195).

Stockage

Stockage:
Stocker à -20°C. Stable pendant un an après l'expédition.
Tampon de stockage:
PBS avec azoture de sodium à 0,02 % et glycérol à 50 % pH 7,3
L'aliquotage n'est pas nécessaire pour le stockage à -20C

***** Les 20ul contiennent 0,1% de BSA.**

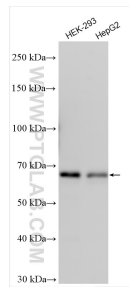
For technical support and original validation data for this product please contact:

T: 1 (888) 4PTGLAB (1-888-478-4522) (toll free in USA), or 1(312) 455-8498 (outside USA)

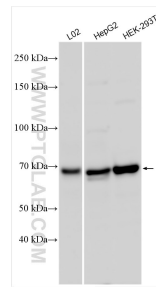
E: proteintech@ptglab.com
W: ptglab.com

This product is exclusively available under Proteintech Group brand and is not available to purchase from any other manufacturer.

Données de validation sélectionnées



Various lysates were subjected to SDS PAGE followed by western blot with 29920-1-AP (POLL antibody) at dilution of 1:1500 incubated at room temperature for 1.5 hours.



Various lysates were subjected to SDS PAGE followed by western blot with 29920-1-AP (POLL antibody) at dilution of 1:2500 incubated at room temperature for 1.5 hours.