

À des fins de recherche uniquement

Anticorps Polyclonal de lapin anti-GPR179



Numéro de catalogue: 29934-1-AP

Informations de base

Numéro de catalogue: 29934-1-AP	Numéro d'acquisition GenBank: NM_001004334.3	Méthode de purification: Purification par affinité contre l'antigène
Taille: 150ul , Concentration: 900 µg/ml by Nanodrop;	Identification du gène (NCBI): 440435	Dilutions recommandées: WB 1:1000-1:6000 IHC 1:250-1:1000 IF 1:50-1:500
Hôte: Lapin	Nom complet: G protein-coupled receptor 179	
Isotype: IgG	MW calculé: 257 kDa	
Immunogen Catalog Number: AG32180	MW observés: 260-270 kDa	

Applications

Applications testées:
IF, IHC, WB, ELISA

Spécificité de l'espèce:
Humain, souris

Remarque-IHC: il est suggéré de démasquer l'antigène avec un tampon de TE buffer pH 9,0; (*) À défaut, 'le démasquage de l'antigène peut être effectué avec un tampon citrate pH 6,0.

Contrôles positifs:

WB : cellules HeLa,
IHC : tissu hépatique de souris,
IF : tissu oculaire de souris,

Informations générales

GPR179 (Probable G-protein coupled receptor 179) belongs to the glutamate receptor subfamily of GPCRs, which is involved in signal transduction through retinal depolarizing bipolar cells. The protein has an EGF-like calcium binding domain and a seven transmembrane domain in the N-terminal region of the protein. Mutations in this gene are associated with congenital stationary night blindness type 1E. GPR179 is expressed in retinal bipolar cells and upregulated in rd1 mice retina with Pde6b mutations (PubMed: 22325361, PubMed: 22325362).

Stockage

Stockage:

Stocker à -20°C. Stable pendant un an après l'expédition.

Tampon de stockage:

PBS avec azoture de sodium à 0,02 % et glycérol à 50 % pH 7,3

L'aliquotage n'est pas nécessaire pour le stockage à -20C

*** Les 20ul contiennent 0,1% de BSA.

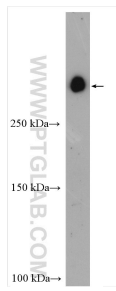
For technical support and original validation data for this product please contact:

T: 1 (888) 4PTGLAB (1-888-478-4522) (toll free in USA), or 1(312) 455-8498 (outside USA)

E: proteintech@ptglab.com
W: ptglab.com

This product is exclusively available under Proteintech Group brand and is not available to purchase from any other manufacturer.

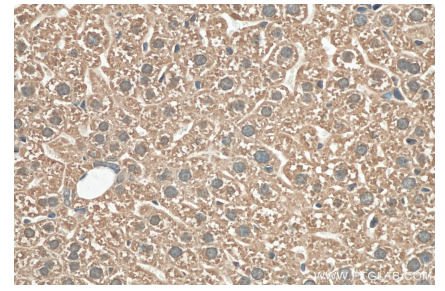
Données de validation sélectionnées



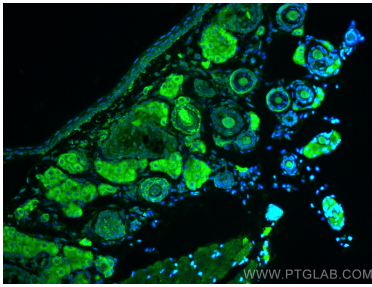
HeLa cells were subjected to SDS PAGE followed by western blot with 29934-1-AP (GPR179 antibody) at dilution of 1:3000 incubated at room temperature for 1.5 hours.



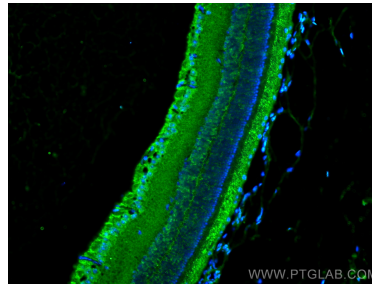
Immunohistochemical analysis of paraffin-embedded mouse liver tissue slide using 29934-1-AP (GPR179 antibody) at dilution of 1:500 (under 10x lens). Heat mediated antigen retrieval with Tris-EDTA buffer (pH 9.0).



Immunohistochemical analysis of paraffin-embedded mouse liver tissue slide using 29934-1-AP (GPR179 antibody) at dilution of 1:500 (under 40x lens). Heat mediated antigen retrieval with Tris-EDTA buffer (pH 9.0).



Immunofluorescent analysis of (4% PFA) fixed mouse eye tissue using GPR179 antibody (29934-1-AP) at dilution of 1:200 and CoraLite®488-Conjugated AffiniPure Goat Anti-Rabbit IgG(H+L).



Immunofluorescent analysis of (4% PFA) fixed mouse eye tissue using GPR179 antibody (29934-1-AP) at dilution of 1:200 and CoraLite®488-Conjugated AffiniPure Goat Anti-Rabbit IgG(H+L).