

À des fins de recherche uniquement

# Anticorps Polyclonal de lapin anti-IREB2



Numéro de catalogue: 29976-1-AP

## Informations de base

<b>Numéro de catalogue:</b> 29976-1-AP	<b>Numéro d'acquisition GenBank:</b> BC017880	<b>Méthode de purification:</b> Purification par affinité contre l'antigène
<b>Taille:</b> 150ul , Concentration: 600 µg/ml by Nanodrop;	<b>Identification du gène (NCBI):</b> 3658	<b>Dilutions recommandées:</b> WB 1:1000-1:8000 IHC 1:200-1:800
<b>Hôte:</b> Lapin	<b>Nom complet:</b> iron-responsive element binding protein 2	
<b>Isotype:</b> IgG	<b>MW calculé:</b> 105 kDa	
<b>Immunogen Catalog Number:</b> AG32233	<b>MW observés:</b> 105 kDa	

## Applications

<b>Applications testées:</b> IHC, WB, ELISA	<b>Contrôles positifs:</b> WB : tissu hépatique de souris, IHC : tissu de cancer du côlon humain,
<b>Spécificité de l'espèce:</b> Humain, souris	

**Remarque-IHC: il est suggéré de démasquer l'antigène avec un tampon de TE buffer pH 9,0; (\*) À défaut, 'le démasquage de l'antigène peut être effectué avec un tampon citrate pH 6,0.**

## Informations générales

IREB2 is an RNA-binding protein that acts to regulate iron levels in the cells by regulating the translation and stability of mRNAs that affect iron homeostasis under conditions when iron is depleted. When iron levels are low, this protein binds to iron-responsive elements (IRES), stem-loop structures located either in the 5' or 3' UTRs. Binding to the 5' UTR represses translation, while binding to the 3' UTR inhibits mRNA degradation. When iron is found in the cell, this protein is degraded in a F-box and leucine rich repeat protein 5-dependent manner.

## Stockage

**Stockage:**  
Stocker à -20°C. Stable pendant un an après l'expédition.  
**Tampon de stockage:**  
PBS avec azoture de sodium à 0,02 % et glycérol à 50 % pH 7,3  
L'aliquotage n'est pas nécessaire pour le stockage à -20C

**\*\*\* Les 20ul contiennent 0,1% de BSA.**

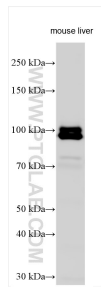
For technical support and original validation data for this product please contact:

T: 1 (888) 4PTGLAB (1-888-478-4522) (toll free in USA), or 1(312) 455-8498 (outside USA)

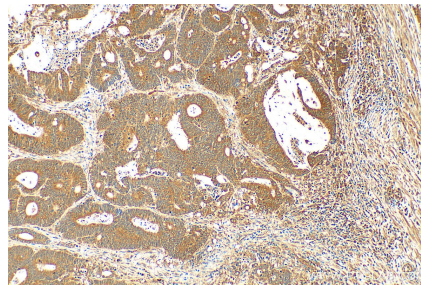
E: [proteintech@ptglab.com](mailto:proteintech@ptglab.com)  
W: [ptglab.com](http://ptglab.com)

**This product is exclusively available under Proteintech Group brand and is not available to purchase from any other manufacturer.**

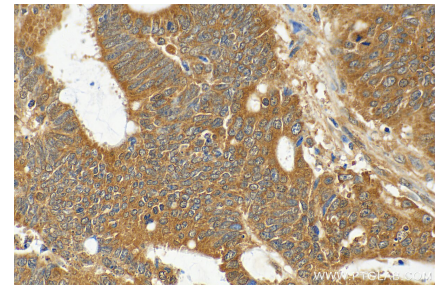
## Données de validation sélectionnées



Various lysates were subjected to SDS PAGE followed by western blot with 29976-1-AP (IREB2 antibody) at dilution of 1:4000 incubated at room temperature for 1.5 hours.



Immunohistochemical analysis of paraffin-embedded human colon cancer tissue slide using 29976-1-AP (IREB2 antibody) at dilution of 1:400 (under 10x lens). Heat mediated antigen retrieval with Tris-EDTA buffer (pH 9.0).



Immunohistochemical analysis of paraffin-embedded human colon cancer tissue slide using 29976-1-AP (IREB2 antibody) at dilution of 1:400 (under 40x lens). Heat mediated antigen retrieval with Tris-EDTA buffer (pH 9.0).