

À des fins de recherche uniquement

Anticorps Polyclonal de lapin anti-MAP3K10



Numéro de catalogue: 29985-1-AP

Informations de base

Numéro de catalogue: 29985-1-AP	Numéro d'acquisition GenBank: NM_002446	Méthode de purification: Purification par affinité contre l'antigène
Taille: 150ul , Concentration: 500 µg/ml by Nanodrop;	Identification du gène (NCBI): 4294	Dilutions recommandées: WB 1:20000-1:100000
Hôte: Lapin	Nom complet: mitogen-activated protein kinase kinase kinase 10	
Isotype: IgG	MW calculé: 104KD	
Immunogen Catalog Number: AG32419	MW observés: 104-115 kDa	

Applications

Applications testées:
WB, ELISA
Spécificité de l'espèce:
Humain, rat, souris

Contrôles positifs:

WB : tissu de muscle squelettique de souris, tissu de muscle squelettique de rat

Informations générales

MAP3K10, also named as MLK2 and MST, belongs to the protein kinase superfamily, STE Ser/Thr protein kinase family and MAP kinase kinase kinase subfamily. MAP3K10 activates the JUN N-terminal pathway. MAP3K10 catalyzes the reaction: ATP + a protein = ADP + a phosphoprotein. MAP3K10 can be detected 104-115 kDa by phosphorylation (PMID: 23178452).

Stockage

Stockage:
Stocker à -20°C. Stable pendant un an après l'expédition.
Tampon de stockage:
PBS avec azoture de sodium à 0,02 % et glycérol à 50 % pH 7,3
L'aliquotage n'est pas nécessaire pour le stockage à -20C

*** Les 20ul contiennent 0,1% de BSA.

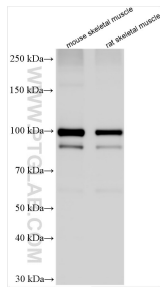
For technical support and original validation data for this product please contact:

T: 1 (888) 4PTGLAB (1-888-478-4522) (toll free in USA), or 1(312) 455-8498 (outside USA)

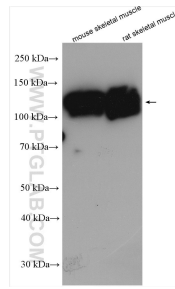
E: proteintech@ptglab.com
W: ptglab.com

This product is exclusively available under Proteintech Group brand and is not available to purchase from any other manufacturer.

Données de validation sélectionnées



Various lysates were subjected to SDS PAGE followed by western blot with 29985-1-AP (MAP3K10 antibody) at dilution of 1:50000 incubated at room temperature for 1.5 hours.



Various lysates were subjected to SDS PAGE followed by western blot with 29985-1-AP (MAP3K10 antibody) at dilution of 1:5000 incubated at room temperature for 1.5 hours.