

À des fins de recherche uniquement

Anticorps Polyclonal de lapin anti-Rabbit IgG control



Numéro de catalogue: 30000-0-AP

185 Publications

Informations de base

Numéro de catalogue:

30000-0-AP

Méthode de purification:

Protein A affinity purification

Taille:

1mg, Concentration: 1 mg/ml by Nanodrop and 1 mg/ml by Bradford method using BSA as the standard;

Dilutions recommandées:

WB 1:2000-1:20000

Hôte:

Lapin

Isotype:

IgG

Applications

Applications testées:

FC, IP, WB, ELISA

Contrôles positifs:

WB : Protéine, Contrôle

Demandes citées:

Cell treatment, ChIP, CoIP, FC, IHC, IP, RIP, WB

Spécificité de l'espèce:

Espèces citées:

Humain, rat, souris

Informations générales

This product is Normal rabbit IgG (without immunized) which purified with Protein A. Normal Rabbit IgG is an isotype control antibody, which is used to estimate the non-specific binding of target primary antibodies due to Fc receptor binding or other protein-protein interactions. An isotype control antibody should have the same immunoglobulin type and be used at the same concentration as the test antibody.

Publications notables

Autrice	Pubmed ID	Journal	Application
Jinguo Xia	36225644	Am J Cancer Res	RIP
Yan Pan	36174379	Biomed Pharmacother	WB
Duraisamy Kempuraj	28952015	J Neuroimmune Pharmacol	

Stockage

Stockage:

Stocker à -20°C. Stable pendant un an après l'expédition.

Tampon de stockage:

PBS avec azoture de sodium à 0,02 % et glycérol à 50 % pH 7,3

L'aliquotage n'est pas nécessaire pour le stockage à -20C

*** Les 20ul contiennent 0,1% de BSA.

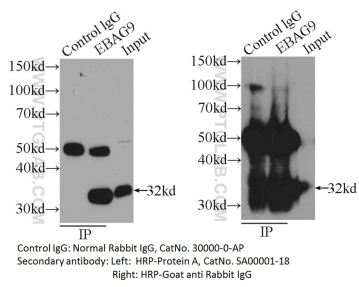
For technical support and original validation data for this product please contact:

T: 1 (888) 4PTGLAB (1-888-478-4522) (toll free in USA), or 1(312) 455-8498 (outside USA)

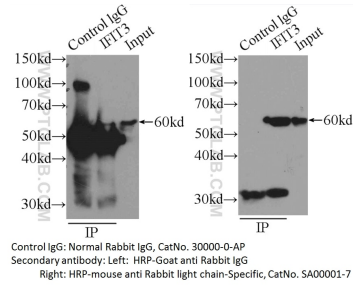
E: proteintech@ptglab.com
W: ptglab.com

This product is exclusively available under Proteintech Group brand and is not available to purchase from any other manufacturer.

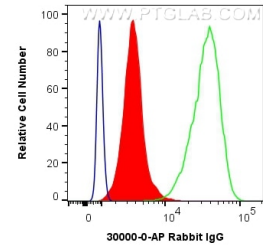
Données de validation sélectionnées



IP sample detected with different secondary antibodies. Normal Rabbit IgG (30000-0-AP) as control.



IP sample detected with different secondary antibodies. Normal Rabbit IgG (30000-0-AP) as control.



1X10⁶ Jurkat cells were intracellularly stained with 0.2 ug Anti-Rabbit IgG control (30000-0-AP) and CoraLite®488-Conjugated AffiniPure Goat Anti-Rabbit IgG(H+L) at dilution 1:1000 (red), or 0.2 ug Control Antibody. Cells were fixed with 4% PFA and permeabilized with Flow Cytometry Perm Buffer (PF00011-C).