

À des fins de recherche uniquement

Anticorps Polyclonal de lapin anti-LGR5



Numéro de catalogue: 30007-1-AP

Informations de base

Numéro de catalogue: 30007-1-AP	Numéro d'acquisition GenBank: BC096324	Méthode de purification: Purification par affinité contre l'antigène
Taille: 150ul , Concentration: 750 µg/ml by Nanodrop;	Identification du gène (NCBI): 8549	Dilutions recommandées: WB 1:500-1:1000
Hôte: Lapin	Nom complet: leucine-rich repeat-containing G protein-coupled receptor 5	
Isotype: IgG	MW calculé 907 aa, 100 kDa	
Immunogen Catalog Number: AG31625	MW observés: 110 kDa	

Applications

Applications testées: WB, ELISA	Contrôles positifs: WB : tissu cérébral de souris, tissu cérébral de rat
Spécificité de l'espèce: Humain, rat, souris	

Informations générales

Leucine-rich repeat-containing G-protein coupled receptor 5 (LGR5) also known as G-protein coupled receptor 49 (GPR49) or G-protein coupled receptor 67 (GPR67) is a protein that in humans is encoded by the LGR5 gene. It is a member of GPCR class A receptor proteins. R-spondin proteins are the biological ligands of LGR5. LGR5 is expressed across a diverse range of tissue such as in the muscle, placenta, spinal cord and brain and particularly as a biomarker of adult stem cells in certain tissues. LGR5 is crucial during embryogenesis as LGR null studies in mice incurred 100% neonatal mortality accompanied by several craniofacial distortions such as ankyloglossia and gastrointestinal dilation (PMID: 9642114, 16575208, 525477).

Stockage

Stockage:
Stocker à -20°C. Stable pendant un an après l'expédition.
Tampon de stockage:
PBS avec azoture de sodium à 0,02 % et glycérol à 50 % pH 7,3
L'aliquotage n'est pas nécessaire pour le stockage à -20C

***** Les 20ul contiennent 0,1% de BSA.**

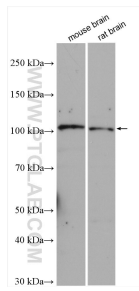
For technical support and original validation data for this product please contact:

T: 1 (888) 4PTGLAB (1-888-478-4522) (toll free in USA), or 1(312) 455-8498 (outside USA)

E: proteintech@ptglab.com
W: ptglab.com

This product is exclusively available under Proteintech Group brand and is not available to purchase from any other manufacturer.

Données de validation sélectionnées



Various lysates were subjected to SDS PAGE followed by western blot with 30007-1-AP (LGR5 antibody) at dilution of 1:800 incubated at room temperature for 1.5 hours.