

À des fins de recherche uniquement

Anticorps Polyclonal de lapin anti-CD200R1



Numéro de catalogue: 30013-1-AP

Informations de base

Numéro de catalogue:

30013-1-AP

Taille:

150ul, Concentration: 100 µg/ml by Nanodrop;

Hôte:

Lapin

Isotype:

IgG

Numéro d'acquisition GenBank:

BC069743

Identification du gène (NCBI):

131450

Nom complet:

CD200 receptor 1

MW observés:

33-36 kDa

Méthode de purification:

Purification par affinité contre l'antigène

Dilutions recommandées:

WB 1:500-1:1000

Applications

Applications testées:

WB, ELISA

Spécificité de l'espèce:

Humain

Contrôles positifs:

WB : cellules A549, cellules K-562, cellules PC-3

Informations générales

Cell surface glycoprotein CD200 receptor 1 (CD200R1) is also named as CD200R, CRTR2, MOX2R and OX2R, and belongs to the CD200R family. CD200R1 is inhibitory receptor for the CD200/OX2 cell surface glycoprotein. CD200R1 is highly glycosylated, containing ten potential N-glycosylation sites (PMID: 15187158). CD200R1 limits inflammation by inhibiting the expression of pro-inflammatory molecules including TNF-alpha, interferons, and inducible nitric oxide synthase (iNOS) in response to selected stimuli. As an immune inhibitory molecule, CD200R1 binds to CD200, ultimately leading to inhibition of classical activation of macrophages and microglia (PMID: 24588829).

Stockage

Stockage:

Stocker à -20°C. Stable pendant un an après l'expédition.

Tampon de stockage:

PBS avec azoture de sodium à 0,02 % et glycérol à 50 % pH 7,3

L'aliquotage n'est pas nécessaire pour le stockage à -20C

*** Les 20ul contiennent 0,1% de BSA.

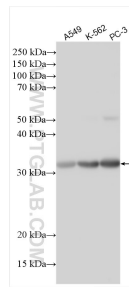
For technical support and original validation data for this product please contact:

T: 1 (888) 4PTGLAB (1-888-478-4522) (toll free in USA), or 1(312) 455-8498 (outside USA)

E: proteintech@ptglab.com
W: ptglab.com

This product is exclusively available under Proteintech Group brand and is not available to purchase from any other manufacturer.

Données de validation sélectionnées



Various lysates were subjected to SDS PAGE followed by western blot with 30013-1-AP (CD200R1 antibody) at dilution of 1:500 incubated at room temperature for 1.5 hours.