

À des fins de recherche uniquement

# Anticorps Polyclonal de lapin anti-BAK



Numéro de catalogue: 30017-1-AP

## Informations de base

Numéro de catalogue: 30017-1-AP	Numéro d'acquisition GenBank: BC004431	Méthode de purification: Purification par affinité contre l'antigène
Taille: 150ul , Concentration: 850 µg/ml by Nanodrop;	Identification du gène (NCBI): 578	Dilutions recommandées: WB 1:500-1:2000
Hôte: Lapin	Nom complet: BCL2-antagonist/killer 1	
Isotype: IgG	MW calculé: 23 kDa	
Immunogen Catalog Number: AG27958	MW observés: 23 kDa	

## Applications

Applications testées: WB, ELISA	Contrôles positifs: WB : cellules HEK-293, cellules HeLa, cellules Neuro-2a, cellules PC-12, cellules THP-1
Spécificité de l'espèce: Humain	

## Informations générales

The protein encoded by this gene belongs to the BCL2 protein family. BCL2 family members form oligomers or heterodimers and act as anti- or pro-apoptotic regulators that are involved in a wide variety of cellular activities. This protein localizes to mitochondria, and functions to induce apoptosis. It interacts with and accelerates the opening of the mitochondrial voltage-dependent anion channel, which leads to a loss in membrane potential and the release of cytochrome c. This protein also interacts with the tumor suppressor P53 after exposure to cell stress.

## Stockage

**Stockage:**  
Stocker à -20°C. Stable pendant un an après l'expédition.  
**Tampon de stockage:**  
PBS avec azoture de sodium à 0,02 % et glycérol à 50 % pH 7,3  
L'aliquotage n'est pas nécessaire pour le stockage à -20C

**\*\*\* Les 20ul contiennent 0,1% de BSA.**

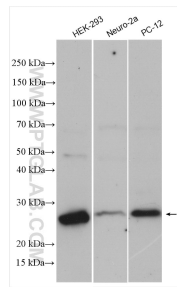
For technical support and original validation data for this product please contact:

T: 1 (888) 4PTGLAB (1-888-478-4522) (toll free in USA), or 1(312) 455-8498 (outside USA)

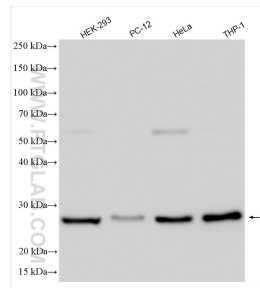
E: [proteintech@ptglab.com](mailto:proteintech@ptglab.com)  
W: [ptglab.com](http://ptglab.com)

**This product is exclusively available under Proteintech Group brand and is not available to purchase from any other manufacturer.**

## Données de validation sélectionnées



Various lysates were subjected to SDS PAGE followed by western blot with 30017-1-AP (BAK antibody) at dilution of 1:1000 incubated at room temperature for 1.5 hours.



Various lysates were subjected to SDS PAGE followed by western blot with 30017-1-AP (BAK antibody) at dilution of 1:4000 incubated at room temperature for 1.5 hours.