

À des fins de recherche uniquement

Anticorps Polyclonal de lapin anti-CUL2



Numéro de catalogue: 30071-1-AP

Informations de base

Numéro de catalogue: 30071-1-AP	Numéro d'acquisition GenBank: BC009591	Méthode de purification: Purification par affinité contre l'antigène
Taille: 150ul , Concentration: 260 µg/ml by Nanodrop;	Identification du gène (NCBI): 8453	Dilutions recommandées: WB 1:200-1:1000
Hôte: Lapin	Nom complet: cullin 2	
Isotype: IgG	MW calculé 87 kDa	
Immunogen Catalog Number: AG32331	MW observés: 80-87 kDa	

Applications

Applications testées: WB, ELISA	Contrôles positifs: WB : cellules PC-3, cellules NIH/3T3, cellules Raji
Spécificité de l'espèce: Humain, souris	

Informations générales

The cullin family proteins are scaffold proteins for the Ring finger type E3 ligases, participating in the proteolysis through the ubiquitin-proteasome pathway. Humans express seven cullin proteins: CUL1-3, CUL4A, CUL4B, CUL5, and CUL7. Each cullin protein can form an E3 ligase similar to the prototype Ring-type E3 ligase Skp1-CUL1-F-box complex. The Cullin-RING-finger type E3 ligases are important regulators in early embryonic development, as highlighted by genetic studies demonstrating that knock-out of CUL1, CUL3, or CUL4A in mice results in early embryonic lethality.

Stockage

Stockage:
Stocker à -20°C. Stable pendant un an après l'expédition.
Tampon de stockage:
PBS avec azoture de sodium à 0,02 % et glycérol à 50 % pH 7,3
L'aliquotage n'est pas nécessaire pour le stockage à -20C

*** Les 20ul contiennent 0,1% de BSA.

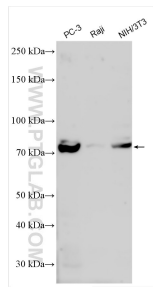
For technical support and original validation data for this product please contact:

T: 1 (888) 4PTGLAB (1-888-478-4522) (toll free in USA), or 1(312) 455-8498 (outside USA)

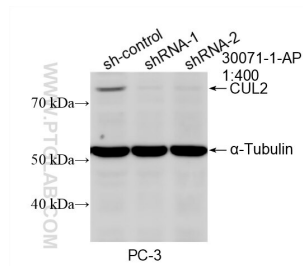
E: proteintech@ptglab.com
W: ptglab.com

This product is exclusively available under Proteintech Group brand and is not available to purchase from any other manufacturer.

Données de validation sélectionnées



Various lysates were subjected to SDS PAGE followed by western blot with 30071-1-AP (CUL2 antibody) at dilution of 1:400 incubated at room temperature for 1.5 hours.



WB result of CUL2 antibody (30071-1-AP; 1:400; incubated at room temperature for 1.5 hours) with sh-Control and sh-CUL2 transfected PC-3 cells.