

À des fins de recherche uniquement

# Anticorps Polyclonal de lapin anti-PTRF



Numéro de catalogue: 30086-1-AP

## Informations de base

<b>Numéro de catalogue:</b> 30086-1-AP	<b>Numéro d'acquisition GenBank:</b> BC008849	<b>Méthode de purification:</b> Purification par affinité contre l'antigène
<b>Taille:</b> 150ul , Concentration: 550 µg/ml by Nanodrop;	<b>Identification du gène (NCBI):</b> 284119	<b>Dilutions recommandées:</b> WB 1:2000-1:16000 IF 1:200-1:800
<b>Hôte:</b> Lapin	<b>Nom complet:</b> polymerase I and transcript release factor	
<b>Isotype:</b> IgG	<b>MW calculé</b> 43 kDa	
<b>Immunogen Catalog Number:</b> AG32786	<b>MW observés:</b> 55 kDa	

## Applications

<b>Applications testées:</b> IF, WB, ELISA	<b>Contrôles positifs:</b>
<b>Spécificité de l'espèce:</b> Humain, souris	<b>WB :</b> cellules A549, cellules HT-1080, cellules NIH/3T3 <b>IF :</b> cellules HepG2,

## Informations générales

Polymerase I and transcript release factor(PTRF) is an essential factor in the biogenesis of caveolae, which involve in numerous process, such as signal transduction and membrane and lipid trafficking. PTRF can terminate transcription of RNA Pol I, which involves pausing of transcription by TTF 1, and dissociation of the transcription complex, release the complex from the template. The calculated molecular weight of PTRF is 43 kDa, but modified PTRF is about 50-55 kDa. (PMID: 11139612)

## Stockage

**Stockage:**  
Stocker à -20°C. Stable pendant un an après l'expédition.  
**Tampon de stockage:**  
PBS avec azoture de sodium à 0,02 % et glycérol à 50 % pH 7,3  
L'aliquotage n'est pas nécessaire pour le stockage à -20C

**\*\*\* Les 20ul contiennent 0,1% de BSA.**

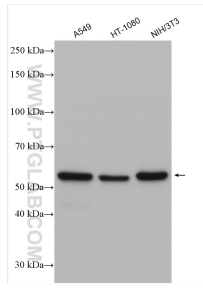
For technical support and original validation data for this product please contact:

T: 1 (888) 4PTGLAB (1-888-478-4522) (toll free in USA), or 1(312) 455-8498 (outside USA)

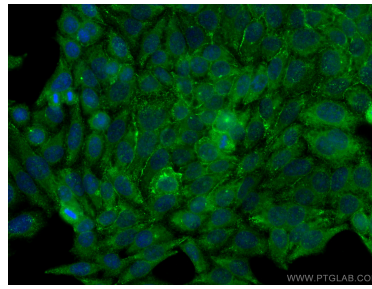
E: [proteintech@ptglab.com](mailto:proteintech@ptglab.com)  
W: [ptglab.com](http://ptglab.com)

**This product is exclusively available under Proteintech Group brand and is not available to purchase from any other manufacturer.**

## Données de validation sélectionnées



Various lysates were subjected to SDS PAGE followed by western blot with 30086-1-AP (PTRF antibody) at dilution of 1:8000 incubated at room temperature for 1.5 hours.



Immunofluorescent analysis of (-20°C Methanol) fixed HepG2 cells using PTRF antibody (30086-1-AP) at dilution of 1:400 and CoraLite® 488-Conjugated AffiniPure Goat Anti-Rabbit IgG(H+L).