

À des fins de recherche uniquement

Anticorps Polyclonal de lapin anti-RIF1



Numéro de catalogue: 30119-1-AP

Informations de base

Numéro de catalogue: 30119-1-AP	Numéro d'acquisition GenBank: NM_001177663.1	Méthode de purification: Purification par affinité contre l'antigène
Taille: 150ul , Concentration: 600 µg/ml by Nanodrop;	Identification du gène (NCBI): 55183	Dilutions recommandées: WB 1:1000-1:4000 IHC 1:400-1:1600 IF 1:600-1:2400
Hôte: Lapin	Nom complet: RAP1 interacting factor homolog (yeast)	
Isotype: IgG	MW calculé: 274 kDa	
Immunogen Catalog Number: AG32422	MW observés: 300 kDa	

Applications

Applications testées:

IF, IHC, WB, ELISA

Spécificité de l'espèce:

Humain

Remarque-IHC: il est suggéré de démasquer l'antigène avec un tampon de TE buffer pH 9,0; (*) À défaut, 'le démasquage de l'antigène peut être effectué avec un tampon citrate pH 6,0.

Contrôles positifs:

WB : cellules A431, cellules HEK-293T, cellules HeLa, cellules HepG2, cellules HT-29, cellules MCF-7

IHC : tissu de cancer du col de l'utérus humain,

IF : cellules HeLa, cellules HEK-293

Informations générales

RIF1 (Rap1-interacting factor 1) is a multifunctional chromosome stability protein implicated in controlling DNA replication and repair. Human RIF1 can interact with protein phosphatase 1 (PP1) and the interaction is crucial for controlling DNA replication by limiting phosphorylation of the MCM complex (PMID: 28077461). RIF1 also acts with PP1 to protect nascent DNA from overdegradation at stalled replication forks (PMID: 31141682). RIF1 promotes non-homologous end joining (NHEJ) in double strand break (DSB) repair (PMID: 30443189). Research studies show that RIF1 is overexpressed in breast cancer tissues and is upregulated in NSCLC tissues (PMID: 30237512).

Stockage

Stockage:

Stocker à -20°C. Stable pendant un an après l'expédition.

Tampon de stockage:

PBS avec azoture de sodium à 0,02 % et glycérol à 50 % pH 7,3

L'aliquotage n'est pas nécessaire pour le stockage à -20C

*** Les 20ul contiennent 0,1% de BSA.

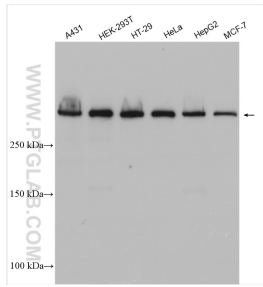
For technical support and original validation data for this product please contact:

T: 1 (888) 4PTGLAB (1-888-478-4522) (toll free in USA), or 1(312) 455-8498 (outside USA)

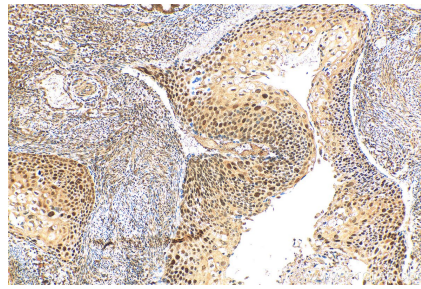
E: proteintech@ptglab.com
W: ptglab.com

This product is exclusively available under Proteintech Group brand and is not available to purchase from any other manufacturer.

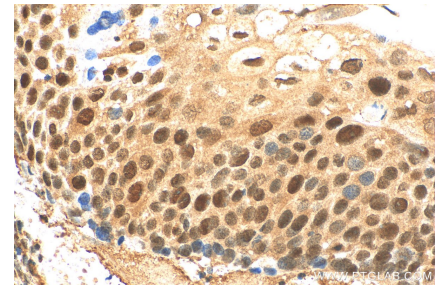
Données de validation sélectionnées



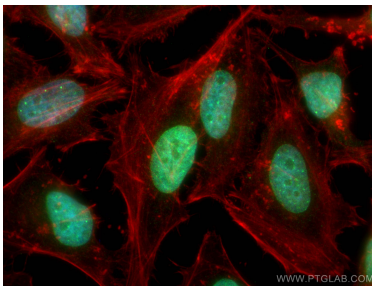
Various lysates were subjected to SDS PAGE followed by western blot with 30119-1-AP (RIF1 antibody) at dilution of 1:2000 incubated at room temperature for 1.5 hours.



Immunohistochemical analysis of paraffin-embedded human cervical cancer tissue slide using 30119-1-AP (RIF1 antibody) at dilution of 1:800 (under 10x lens). Heat mediated antigen retrieval with Tris-EDTA buffer (pH 9.0).



Immunohistochemical analysis of paraffin-embedded human cervical cancer tissue slide using 30119-1-AP (RIF1 antibody) at dilution of 1:800 (under 40x lens). Heat mediated antigen retrieval with Tris-EDTA buffer (pH 9.0).



Immunofluorescent analysis of (4% PFA) fixed HeLa cells using RIF1 antibody (30119-1-AP) at dilution of 1:1200 and CoraLite®488-Conjugated AffiniPure Goat Anti-Rabbit IgG(H+L), CL594-Phalloidin (red).