

À des fins de recherche uniquement

Anticorps Polyclonal de lapin anti-PACS2



Numéro de catalogue: 30172-1-AP

Informations de base

Numéro de catalogue: 30172-1-AP	Numéro d'acquisition GenBank: NM_001100913	Méthode de purification: Purification par affinité contre l'antigène
Taille: 150ul , Concentration: 500 µg/ml by Nanodrop;	Identification du gène (NCBI): 23241	Dilutions recommandées: WB 1:500-1:2000
Hôte: Lapin	Nom complet: phosphofurin acidic cluster sorting protein 2	
Isotype: IgG	MW calculé: 98kd	
Immunogen Catalog Number: AG32902	MW observés: 100-130 kDa	

Applications

Applications testées: WB, ELISA	Contrôles positifs: WB : cellules HCT 116, cellules HuH-7
Spécificité de l'espèce: Humain	

Informations générales

PACS2, also named PACS1L or KIAA0602, is one of PACS (phosphofurin acidic cluster sorting) proteins which are one such family of multifunctional membrane traffic regulators that mediate organ homeostasis and have important roles in diverse pathologies and disease states. PACS2 is a multifunctional sorting protein that controls the endoplasmic reticulum (ER)-mitochondria communication, ER homeostasis, and apoptosis. PACS2 may be involved in ion channel trafficking, directing acidic cluster-containing ion channels to distinct subcellular compartments.

Stockage

Stockage:
Stocker à -20°C. Stable pendant un an après l'expédition.
Tampon de stockage:
PBS avec azoture de sodium à 0,02 % et glycérol à 50 % pH 7,3
L'aliquotage n'est pas nécessaire pour le stockage à -20C

***** Les 20ul contiennent 0,1% de BSA.**

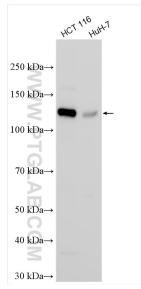
For technical support and original validation data for this product please contact:

T: 1 (888) 4PTGLAB (1-888-478-4522) (toll free in USA), or 1(312) 455-8498 (outside USA)

E: proteintech@ptglab.com
W: ptglab.com

This product is exclusively available under Proteintech Group brand and is not available to purchase from any other manufacturer.

Données de validation sélectionnées



Various lysates were subjected to SDS PAGE followed by western blot with 30172-1-AP (PACS2 antibody) at dilution of 1:1000 incubated at room temperature for 1.5 hours.