

À des fins de recherche uniquement

Anticorps Polyclonal de lapin anti-Ribosomal protein L4



Numéro de catalogue: 30182-1-AP **Phare**

Informations de base

Numéro de catalogue: 30182-1-AP	Numéro d'acquisition GenBank: BC009888	Méthode de purification: Purification par affinité contre l'antigène
Taille: 150ul , Concentration: 400 µg/ml by Nanodrop;	Identification du gène (NCBI): 6124	Dilutions recommandées: WB 1:5000-1:50000
Hôte: Lapin	Nom complet: ribosomal protein L4	
Isotype: IgG	MW calculé: 48 kDa	
Immunogen Catalog Number: AG32272	MW observés: 48 kDa	

Applications

Applications testées: WB, ELISA	Contrôles positifs: WB : cellules HeLa, cellules HepG2
Spécificité de l'espèce: Humain	

Informations générales

60S ribosomal protein L4 is encoded by RPL4 (or RPL1) gene. RPL4 is a component of 60S subunit of ribosome, and belongs to the L4E family. By interacting with c-Myb, RPL4 plays a important role in c-myc expression in response to growth factor and nutritional signals. Recently RPL4 was reported to be able to increase efficiency of viral recoding sequence.

Stockage

Stockage:
Stocker à -20°C. Stable pendant un an après l'expédition.
Tampon de stockage:
PBS avec azoture de sodium à 0,02 % et glycérol à 50 % pH 7,3
L'aliquotage n'est pas nécessaire pour le stockage à -20C

***** Les 20ul contiennent 0,1% de BSA.**

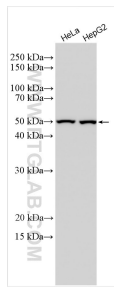
For technical support and original validation data for this product please contact:

T: 1 (888) 4PTGLAB (1-888-478-4522) (toll free in USA), or 1(312) 455-8498 (outside USA)

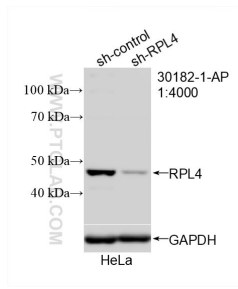
E: proteintech@ptglab.com
W: ptglab.com

This product is exclusively available under Proteintech Group brand and is not available to purchase from any other manufacturer.

Données de validation sélectionnées



Various lysates were subjected to SDS PAGE followed by western blot with 30182-1-AP (Ribosomal protein L4 antibody) at dilution of 1:10000 incubated at room temperature for 1.5 hours.



WB result of Ribosomal protein L4 antibody (30182-1-AP; 1:4000; incubated at room temperature for 1.5 hours) with sh-Control and sh-Ribosomal protein L4 transfected HeLa cells.