

À des fins de recherche uniquement

Anticorps Polyclonal de lapin anti-SHMT1



Numéro de catalogue: 30192-1-AP

Informations de base

Numéro de catalogue: 30192-1-AP	Numéro d'acquisition GenBank: BC038598	Méthode de purification: Purification par affinité contre l'antigène
Taille: 150ul , Concentration: 800 µg/ml by Nanodrop;	Identification du gène (NCBI): 6470	Dilutions recommandées: WB 1:5000-1:50000 IHC 1:500-1:2000 IF 1:200-1:800
Hôte: Lapin	Nom complet: serine hydroxymethyltransferase 1 (soluble)	
Isotype: IgG	MW calculé 483 aa, 53 kDa	
Immunogen Catalog Number: AG31269	MW observés: 45-53 kDa	

Applications

Applications testées:
FC, IF, IHC, WB, ELISA

Spécificité de l'espèce:
Humain, rat, souris

Remarque-IHC: il est suggéré de démasquer l'antigène avec un tampon de TE buffer pH 9,0; (*) À défaut, 'le démasquage de l'antigène peut être effectué avec un tampon citrate pH 6,0.

Contrôles positifs:

WB : cellules A431, cellules HeLa, cellules MCF-7, cellules MOLT-4, cellules T-47D, tissu hépatique de rat, tissu hépatique de souris

IHC : tissu rénal humain,

IF : cellules HepG2,

Informations générales

SHMT1 is the cellular form of serine hydroxymethyltransferase, a pyridoxal phosphate-containing enzyme that catalyzes the reversible conversion of serine and tetrahydrofolate to glycine and 5,10-methylene tetrahydrofolate. Alternative splicing of this gene results in 2 transcript variants encoding 2 different isoforms. This antibody can detect both 49 kDa and 53 kDa isoforms in western blotting.

Stockage

Stockage:

Stocker à -20°C. Stable pendant un an après l'expédition.

Tampon de stockage:

PBS avec azoture de sodium à 0,02 % et glycérol à 50 % pH 7,3

L'aliquotage n'est pas nécessaire pour le stockage à -20C

***** Les 20ul contiennent 0,1% de BSA.**

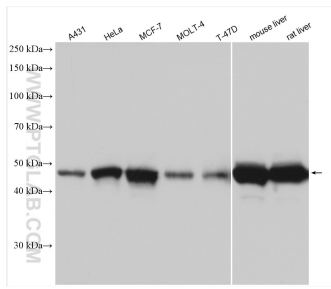
For technical support and original validation data for this product please contact:

T: 1 (888) 4PTGLAB (1-888-478-4522) (toll free in USA), or 1(312) 455-8498 (outside USA)

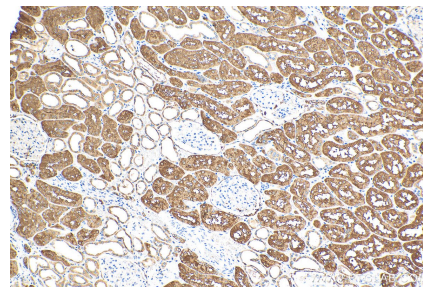
E: proteintech@ptglab.com
W: ptglab.com

This product is exclusively available under Proteintech Group brand and is not available to purchase from any other manufacturer.

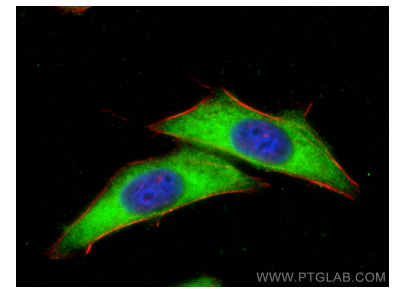
Données de validation sélectionnées



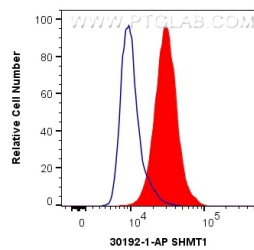
Various lysates were subjected to SDS PAGE followed by western blot with 30192-1-AP (SHMT1 antibody) at dilution of 1:10000 incubated at room temperature for 1.5 hours.



Immunohistochemical analysis of paraffin-embedded human kidney tissue slide using 30192-1-AP (SHMT1 antibody) at dilution of 1:1000 (under 10x lens). Heat mediated antigen retrieval with Tris-EDTA buffer (pH 9.0).



Immunofluorescent analysis of (-20°C Ethanol) fixed HepG2 cells using SHMT1 antibody (30192-1-AP) at dilution of 1:400 and CoraLite@488-Conjugated AffiniPure Goat Anti-Rabbit IgG(H+L), CL594-Phalloidin (red).



1X10⁶ HeLa cells were intracellularly stained with 0.4 ug Anti-Human SHMT1 (30192-1-AP) and CoraLite@488-Conjugated AffiniPure Goat Anti-Rabbit IgG(H+L) at dilution 1:1000 (red), or 0.4 ug Control Antibody. Cells were fixed with 4% PFA and permeabilized with Flow Cytometry Perm Buffer (PF00011-C).