

À des fins de recherche uniquement

Anticorps Polyclonal de lapin anti-IL-1 beta



Numéro de catalogue: 30234-1-AP

Informations de base

Numéro de catalogue: 30234-1-AP	Numéro d'acquisition GenBank: NM_000576	Méthode de purification: Purification par affinité contre l'antigène
Taille: 150ul , Concentration: 550 µg/ml by Nanodrop;	Identification du gène (NCBI): 3553	Dilutions recommandées: WB 1:500-1:2000
Hôte: Lapin	Nom complet: interleukin 1, beta	
Isotype: IgG	MW calculé 31 kDa	
Immunogen Catalog Number: AG30574	MW observés: 31 kDa	

Applications

Applications testées: WB, ELISA	Contrôles positifs: WB : cellules THP-1, cellules MG U-87
Spécificité de l'espèce: Humain	

Informations générales

Interleukin-1, produced mainly by blood monocytes, mediates the panoply of host reactions collectively known as acute phase response. It is identical to endogenous pyrogen. The multiple biologic activities that define IL1 are properties of a 15- to 18-kD protein that is derived from a 30- to 35-kD precursor. Interleukin 1 β (IL-1B) is a member of the interleukin 1 cytokine family. It is a pro-inflammatory cytokine against infection, playing an important role in the pathogenesis of cancers. It signals through various adaptor proteins and kinases that lead to activation of numerous downstream targets

Stockage

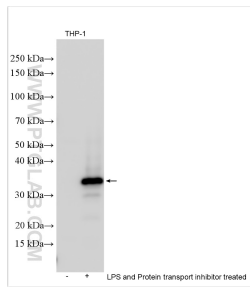
Stockage:
Stocker à -20°C. Stable pendant un an après l'expédition.
Tampon de stockage:
PBS avec azoture de sodium à 0,02 % et glycérol à 50 % pH 7,3
L'aliquotage n'est pas nécessaire pour le stockage à -20C

*** Les 20ul contiennent 0,1% de BSA.

For technical support and original validation data for this product please contact:
T: 1 (888) 4PTGLAB (1-888-478-4522) (toll free in USA), or 1(312) 455-8498 (outside USA) E: proteintech@ptglab.com W: ptglab.com

This product is exclusively available under Proteintech Group brand and is not available to purchase from any other manufacturer.

Données de validation sélectionnées



Untreated, LPS and Protein transport inhibitor treated THP-1 cells were subjected to SDS PAGE followed by western blot with 30234-1-AP (IL1B antibody) at dilution of 1:1000 incubated at room temperature for 1.5 hours.