

À des fins de recherche uniquement

Anticorps Polyclonal de lapin anti-Phospho-EGFR (Tyr1092)



Numéro de catalogue: 30278-1-AP

Informations de base

Numéro de catalogue:

30278-1-AP

Taille:

100ul, Concentration: 400 µg/ml by Nanodrop;

Hôte:

Lapin

Isotype:

IgG

Numéro d'acquisition GenBank:

BC094761

Identification du gène (NCBI):

1956

Nom complet:

epidermal growth factor receptor (erythroblastic leukemia viral (v-erb-b) oncogene homolog, avian)

MW calculé

1210 aa, 134 kDa

MW observés:

170 kDa

Méthode de purification:

Purification par affinité contre l'antigène

Dilutions recommandées:

WB 1:500-1:3000

Applications

Applications testées:

WB, ELISA

Spécificité de l'espèce:

Humain

Contrôles positifs:

WB : EGF treated HeLa cells,

Informations générales

Epidermal Growth Factor Receptor (EGFR) is one of the receptor tyrosine kinases (RTKs), members of the ErbB/HER family which consists of ErbB1 (EGFR or HER1), ErbB2 (HER2 or Neu), ErbB3 (HER3), and ErbB4 (HER4). Aberrant activation of EGFR is among the most common oncogenic driving events in human cancer, which is mediated largely through different classes of genomic alterations within the EGFR gene. Autophosphorylation at Tyr-1092 and/or Tyr-1110 recruits STAT3. (PMID: 35164092, PMID: 29464683, PMID: 37085908). Some scientists call EGFR Tyr1092 as EGFR Tyr1068, the site where the signaling peptide is removed.

Stockage

Stockage:

Stocker à -20°C. Stable pendant un an après l'expédition.

Tampon de stockage:

PBS avec azoture de sodium à 0,02 % et glycérol à 50 % pH 7,3

L'aliquotage n'est pas nécessaire pour le stockage à -20C

*** Les 20ul contiennent 0,1% de BSA.

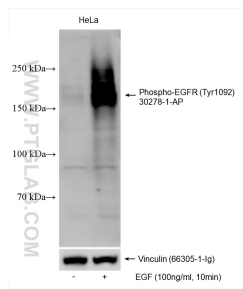
For technical support and original validation data for this product please contact:

T: 1 (888) 4PTGLAB (1-888-478-4522) (toll free in USA), or 1(312) 455-8498 (outside USA)

E: proteintech@ptglab.com
W: ptglab.com

This product is exclusively available under Proteintech Group brand and is not available to purchase from any other manufacturer.

Données de validation sélectionnées



Non-treated HeLa and EGF treated HeLa cells were subjected to SDS PAGE followed by western blot with 30278-1-AP (Phospho-EGFR (Tyr1092) antibody) at dilution of 1:1500 incubated at room temperature for 1.5 hours. The membrane was stripped and re-blotted with Vinculin antibody as loading control.