

À des fins de recherche uniquement

Anticorps Polyclonal de lapin anti-PSMB7



Numéro de catalogue: 30283-1-AP

Informations de base

Numéro de catalogue: 30283-1-AP	Numéro d'acquisition GenBank: BC000509	Méthode de purification: Purification par affinité contre l'antigène
Taille: 150ul , Concentration: 550 µg/ml by Nanodrop;	Identification du gène (NCBI): 5695	Dilutions recommandées: WB 1:1000-1:4000 IHC 1:50-1:500
Hôte: Lapin	Nom complet: proteasome (prosome, macropain) subunit, beta type, 7	
Isotype: IgG	MW calculé: 29.9 kDa	
Immunogen Catalog Number: AG32201	MW observés: 30 kDa	

Applications

Applications testées:
IHC, WB, ELISA

Spécificité de l'espèce:
Humain, rat, souris

Remarque-IHC: il est suggéré de démasquer l'antigène avec un tampon de TE buffer pH 9,0; (*) À défaut, 'le démasquage de l'antigène peut être effectué avec un tampon citrate pH 6,0.

Contrôles positifs:

WB : cellules HEK-293, cellules HepG2, cellules MCF-7, tissu de muscle squelettique de rat, tissu de muscle squelettique de souris, tissu rénal de rat, tissu rénal de souris

IHC : tissu de cancer du côlon humain,

Informations générales

The proteasome is a multicatalytic proteinase complex with a highly ordered ring-shaped 20S core structure. PSMB7 protein is a member of the proteasome B-type family, also known as the T1B family, and is a 20S core beta subunit in the proteasome. Expression of this catalytic subunit is downregulated by gamma interferon, and proteolytic processing is required to generate a mature subunit. Component of the 20S core proteasome complex are involved in the proteolytic degradation of most intracellular proteins. PSMB7 displays a trypsin-like activity. (PMID:15244466, PMID:27176742, PMID: 8610016)

Stockage

Stockage:

Stocker à -20°C. Stable pendant un an après l'expédition.

Tampon de stockage:

PBS avec azoture de sodium à 0,02 % et glycérol à 50 % pH 7,3

L'aliquotage n'est pas nécessaire pour le stockage à -20C

***** Les 20ul contiennent 0,1% de BSA.**

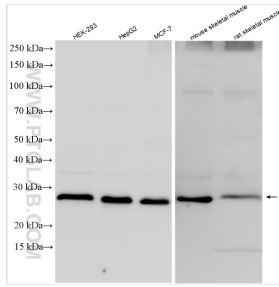
For technical support and original validation data for this product please contact:

T: 1 (888) 4PTGLAB (1-888-478-4522) (toll free in USA), or 1(312) 455-8498 (outside USA)

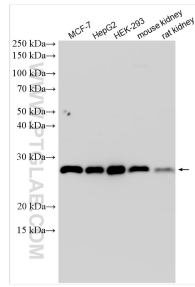
E: proteintech@ptglab.com
W: ptglab.com

This product is exclusively available under Proteintech Group brand and is not available to purchase from any other manufacturer.

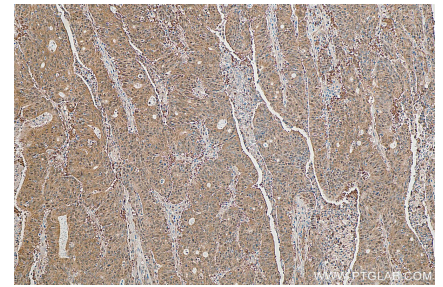
Données de validation sélectionnées



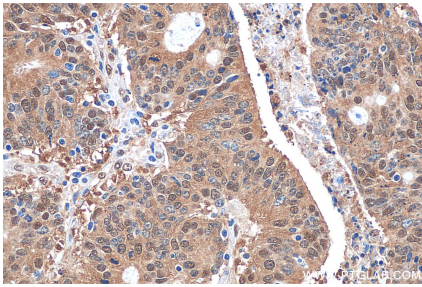
Various lysates were subjected to SDS PAGE followed by western blot with 30283-1-AP (PSMB7 antibody) at dilution of 1:2000 incubated at room temperature for 1.5 hours.



Various lysates were subjected to SDS PAGE followed by western blot with 30283-1-AP (PSMB7 antibody) at dilution of 1:4000 incubated at room temperature for 1.5 hours.



Immunohistochemical analysis of paraffin-embedded human colon cancer tissue slide using 30283-1-AP (PSMB7 antibody) at dilution of 1:200 (under 10x lens). Heat mediated antigen retrieval with Tris-EDTA buffer (pH 9.0).



Immunohistochemical analysis of paraffin-embedded human colon cancer tissue slide using 30283-1-AP (PSMB7 antibody) at dilution of 1:200 (under 40x lens). Heat mediated antigen retrieval with Tris-EDTA buffer (pH 9.0).