

À des fins de recherche uniquement

# Anticorps Polyclonal de lapin anti-TMEM106B



Numéro de catalogue: 30301-1-AP **Phare**

## Informations de base

<b>Numéro de catalogue:</b> 30301-1-AP	<b>Numéro d'acquisition GenBank:</b> BC033901	<b>Méthode de purification:</b> Purification par affinité contre l'antigène
<b>Taille:</b> 150ul , Concentration: 550 µg/ml by Nanodrop;	<b>Identification du gène (NCBI):</b> 54664	<b>Dilutions recommandées:</b> WB 1:500-1:2000
<b>Hôte:</b> Lapin	<b>Nom complet:</b> transmembrane protein 106B	
<b>Isotype:</b> IgG	<b>MW calculé</b> 31 kDa	
	<b>MW observés:</b> 45 kDa	

## Applications

<b>Applications testées:</b> WB, ELISA	<b>Contrôles positifs:</b> WB : cellules A549, cellules HeLa
<b>Spécificité de l'espèce:</b> Humain	

## Informations générales

TMEM106B is a genetic risk factor for frontotemporal lobar degeneration with TDP-43 inclusions (FTLD-TDP). Amyotrophic lateral sclerosis (ALS), like FTLD-TDP, is characterized by pathological TDP-43 inclusions. TMEM106B expression in the brain may be linked to mechanisms of disease in FTLD-TDP and risk alleles confer genetic susceptibility by increasing gene expression. TMEM106B can be showed as 31-55 kDa and 70-90 kDa (Glycosylated or Dimer) form in western blot test. (PMID: 27543298, 22895706, PMID: 23136129).

## Stockage

**Stockage:**  
Stocker à -20°C. Stable pendant un an après l'expédition.  
**Tampon de stockage:**  
PBS avec azoture de sodium à 0,02 % et glycérol à 50 % pH 7,3  
L'aliquotage n'est pas nécessaire pour le stockage à -20C

**\*\*\* Les 20ul contiennent 0,1% de BSA.**

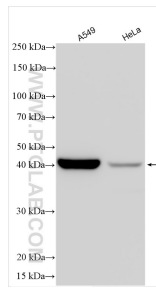
For technical support and original validation data for this product please contact:

T: 1 (888) 4PTGLAB (1-888-478-4522) (toll free in USA), or 1(312) 455-8498 (outside USA)

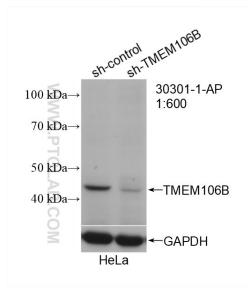
E: [proteintech@ptglab.com](mailto:proteintech@ptglab.com)  
W: [ptglab.com](http://ptglab.com)

**This product is exclusively available under Proteintech Group brand and is not available to purchase from any other manufacturer.**

## Données de validation sélectionnées



Various lysates were subjected to SDS PAGE followed by western blot with 30301-1-AP (TMEM106B antibody) at dilution of 1:1000 incubated at room temperature for 1.5 hours.



WB result of TMEM106B antibody (30301-1-AP; 1:600; room temperature for 1.5 hours) with negative control and TMEM106B knockout HeLa cells.