

À des fins de recherche uniquement

Anticorps Polyclonal de lapin anti-PFKM



Numéro de catalogue: 30326-1-AP **Phare**

Informations de base

Numéro de catalogue:

30326-1-AP

Taille:

150ul, Concentration: 800 µg/ml by Nanodrop;

Hôte:

Lapin

Isotype:

IgG

Immunogen Catalog Number:

AG30840

Numéro d'acquisition GenBank:

BC021203

Identification du gène (NCBI):

5213

Nom complet:

phosphofructokinase, muscle

MW observés:

75-85 kDa

Méthode de purification:

Purification par affinité contre l'antigène

Dilutions recommandées:

WB 1:1000-1:6000

Applications

Applications testées:

WB, ELISA

Spécificité de l'espèce:

Humain

Contrôles positifs:

WB : cellules PC-3, cellules HEK-293, cellules MCF-7, cellules Raji

Informations générales

PFKM, also named as GSD7, PFK-1, PFK-M and PFKX, belongs to the phosphofructokinase family and Two domains subfamily. PFKM catalyze the reaction: ATP + D-fructose 6-phosphate = ADP + D-fructose 1,6-bisphosphate. It is a key regulatory enzyme in glycolysis. Defects in PFKM are the cause of glycogen storage disease type 7 (GSD7). PFKM has three isoforms with molecular mass of 85, 82 and 93 kDa. The antibody is specific to PFKM.

Stockage

Stockage:

Stocker à -20°C. Stable pendant un an après l'expédition.

Tampon de stockage:

PBS avec azoture de sodium à 0,02 % et glycérol à 50 % pH 7,3

L'aliquotage n'est pas nécessaire pour le stockage à -20C

***** Les 20ul contiennent 0,1% de BSA.**

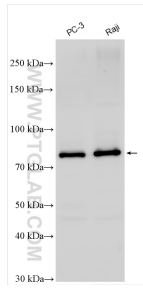
For technical support and original validation data for this product please contact:

T: 1 (888) 4PTGLAB (1-888-478-4522) (toll free in USA), or 1(312) 455-8498 (outside USA)

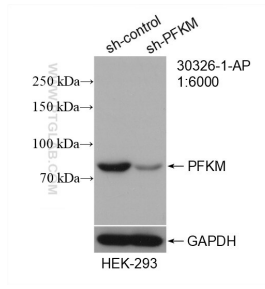
E: proteintech@ptglab.com
W: ptglab.com

This product is exclusively available under Proteintech Group brand and is not available to purchase from any other manufacturer.

Données de validation sélectionnées



Various lysates were subjected to SDS PAGE followed by western blot with 30326-1-AP (PFKM antibody) at dilution of 1:3000 incubated at room temperature for 1.5 hours.



WB result of PFKM antibody (30326-1-AP; 1:6000; incubated at room temperature for 1.5 hours) with sh-Control and sh-PFKM transfected HEK-293 cells.