

À des fins de recherche uniquement

# Anticorps Polyclonal de lapin anti-Phospho-RB1 (Ser807/811)



Numéro de catalogue: 30376-1-AP

## Informations de base

Numéro de catalogue:

30376-1-AP

Taille:

100ul, Concentration: 500 µg/ml by Nanodrop;

Hôte:

Lapin

Isotype:

IgG

Numéro d'acquisition GenBank:

BC039060

Identification du gène (NCBI):

5925

Nom complet:

retinoblastoma 1

MW calculé

928 aa, 106 kDa

MW observés:

110 kDa

Méthode de purification:

Purification par affinité contre l'antigène

Dilutions recommandées:

WB 1:2000-1:10000

## Applications

Applications testées:

WB, ELISA

Spécificité de l'espèce:

Humain

Contrôles positifs:

WB : cellules Jurkat traitées à la calyculine A, cellules Jurkat

## Informations générales

RB1, also named as pp110, pRb and p105 Rb, belongs to the retinoblastoma protein (RB) family. Phosphorylation and dephosphorylation of RB1 is well known to be a key regulator in cell cycle progression in cancer cells. Phosphorylation of RB1 at multiple S/T residues, first by cyclin D-dependent kinases and subsequently by cyclin E-CDK2 in later G1 phase, completely inactivates RB1, enabling the release of E2F from RB1 complexes and activation of E2F-mediated transcription. Monomethylation at Lys810 by SMYD2 enhances phosphorylation at Ser807 and Ser811, and promotes cell cycle progression. (PMID: 22787429, PMID: 21115810, PMID: 32344731)

## Stockage

Stockage:

Stocker à -20°C. Stable pendant un an après l'expédition.

Tampon de stockage:

PBS avec azoture de sodium à 0,02 % et glycérol à 50 % pH 7,3

L'aliquotage n'est pas nécessaire pour le stockage à -20C

\*\*\* Les 20ul contiennent 0,1% de BSA.

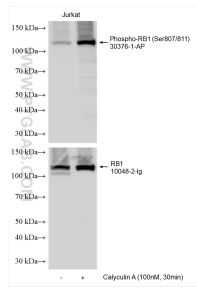
For technical support and original validation data for this product please contact:

T: 1 (888) 4PTGLAB (1-888-478-4522) (toll free in USA), or 1(312) 455-8498 (outside USA)

E: [proteintech@ptglab.com](mailto:proteintech@ptglab.com)  
W: [ptglab.com](http://ptglab.com)

This product is exclusively available under Proteintech Group brand and is not available to purchase from any other manufacturer.

## Données de validation sélectionnées



Non-treated and Calyculin A treated Jurkat cells were subjected to SDS PAGE followed by western blot with 30376-1-AP (Phospho-RB1 (Ser807/811) antibody) at dilution of 1:5000 incubated at room temperature for 1.5 hours. The membrane was stripped and re-blotted with RB1 antibody (10048-2-Ig) subsequently.