

À des fins de recherche uniquement

# Anticorps Polyclonal de lapin anti-GPX4



Numéro de catalogue: 30388-1-AP

2 Publications

## Informations de base

Numéro de catalogue:  
30388-1-AP

Taille:  
150ul , Concentration: 550 µg/ml by  
Nanodrop;

Hôte:  
Lapin

Isotype:  
IgG

Immunogen Catalog Number:  
AG30650

Numéro d'acquisition GenBank:  
BC021567

Identification du gène (NCBI):  
2879

Nom complet:  
glutathione peroxidase 4  
(phospholipid hydroperoxidase)

MW observés:  
20-23 kDa

Méthode de purification:  
Purification par affinité contre  
l'antigène

Dilutions recommandées:  
WB 1:500-1:2000

## Applications

Applications testées:  
FC, WB, ELISA

Demandes citées:  
WB

Spécificité de l'espèce:  
Humain, rat, souris

Espèces citées:  
Humain, souris

Contrôles positifs:

WB : cellules HCT 116, cellules Jurkat, tissu cérébral de  
rat, tissu cérébral de souris

## Informations générales

GPX4 (Phospholipid hydroperoxide glutathione peroxidase, mitochondrial) protects cells against membrane lipid peroxidation and cell death. Required for normal sperm development and male fertility. It has two isoforms about 20KDa and 22KDa, respectively. GPX4 is a monomer, but it has a tendency to form higher mass oligomers (PMID:17630701). It presents primarily in testis.

## Publications notables

Autrice	Pubmed ID	Journal	Application
Hanyue Qiu	37689783	Nat Commun	WB
Peizhong Kong	37611494	Redox Biol	WB

## Stockage

Stockage:

Stocker à -20°C. Stable pendant un an après l'expédition.

Tampon de stockage:

PBS avec azoture de sodium à 0,02 % et glycérol à 50 % pH 7,3

L'aliquotage n'est pas nécessaire pour le stockage à -20C

\*\*\* Les 20ul contiennent 0,1% de BSA.

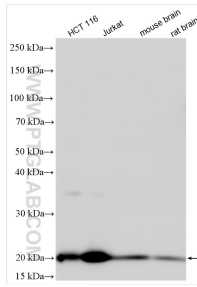
For technical support and original validation data for this product please contact:

T: 1 (888) 4PTGLAB (1-888-478-4522) (toll free  
in USA), or 1(312) 455-8498 (outside USA)

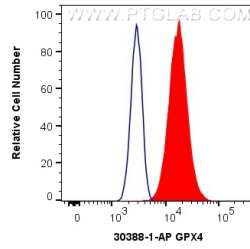
E: proteintech@ptglab.com  
W: ptglab.com

This product is exclusively available under Proteintech Group brand and is not available to purchase from any other manufacturer.

## Données de validation sélectionnées



Various lysates were subjected to SDS PAGE followed by western blot with 30388-1-AP (GPX4 antibody) at dilution of 1:1000 incubated at room temperature for 1.5 hours.



1X10<sup>6</sup> HeLa cells were intracellularly stained with 0.4 ug Anti-Human GPX4 (30388-1-AP) and CoraLite® 488-Conjugated AffiniPure Goat Anti-Rabbit IgG(H+L) at dilution 1:1000 (red), or 0.4 ug Isotype Control. Cells were fixed with 4% PFA and permeabilized with Flow Cytometry Perm Buffer (PF00011-C).