

À des fins de recherche uniquement

# Anticorps Polyclonal de lapin anti-ANKIB1



Numéro de catalogue: 30467-1-AP

## Informations de base

<b>Numéro de catalogue:</b> 30467-1-AP	<b>Numéro d'acquisition GenBank:</b> NM_019004.1	<b>Méthode de purification:</b> Purification par affinité contre l'antigène
<b>Taille:</b> 150ul, Concentration: 900 µg/ml by Nanodrop;	<b>Identification du gène (NCBI):</b> 54467	<b>Dilutions recommandées:</b> WB 1:1000-1:4000 IP 0.5-4.0 ug for IP and 1:1000-1:4000 for WB IHC 1:50-1:500 IF 1:50-1:500
<b>Hôte:</b> Lapin	<b>Nom complet:</b> ankyrin repeat and IBR domain containing 1	
<b>Isotype:</b> IgG	<b>MW calculé:</b> 122 kDa	
<b>Immunogen Catalog Number:</b> AG33126	<b>MW observés:</b> 122 kDa	

## Applications

<b>Applications testées:</b> IF, IHC, IP, WB, ELISA	<b>Contrôles positifs:</b>
<b>Spécificité de l'espèce:</b> Humain	<b>WB :</b> cellules A549, cellules HeLa, cellules Jurkat, cellules MCF-7
<b>Remarque-IHC: il est suggéré de démasquer l'antigène avec un tampon de TE buffer pH 9,0; (*) À défaut, 'le démasquage de l'antigène peut être effectué avec un tampon citrate pH 6,0.</b>	<b>IP :</b> cellules HeLa,
	<b>IHC :</b> tissu rénal de souris, tissu cérébral de souris, tissu placentaire de souris
	<b>IF :</b> cellules U2OS, cellules A431

## Informations générales

Ankyrin repeat and IBR domain-containing protein 1 (ANKIB1) is also named as KIAA1386, and belongs to the RBR family. ANKIB1 might act as an E3 ubiquitin-protein ligase, or as part of E3 complex, which accepts ubiquitin from specific E2 ubiquitin-conjugating enzymes and then transfers it to substrates. The common biomarkers found within the H and EC region of brain are ZNF621, SLC25A46, RAE1, and ANKIB1. Among these biomarkers, RAE1, ANKIB1, and SLC25A46 have been reported to be prominently involved in several neurodegenerative disorders (PMID:33878365). ANKIB1 is also found to be associated with Cerebral cavernous malformations (PMID:20798775).

## Stockage

**Stockage:**  
Stocker à -20°C. Stable pendant un an après l'expédition.  
**Tampon de stockage:**  
PBS avec azoture de sodium à 0,02 % et glycérol à 50 % pH 7,3  
L'aliquotage n'est pas nécessaire pour le stockage à -20C

\*\*\* Les 20ul contiennent 0,1% de BSA.

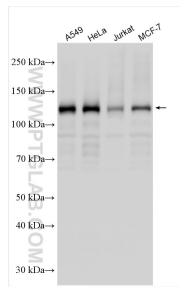
For technical support and original validation data for this product please contact:

T: 1 (888) 4PTGLAB (1-888-478-4522) (toll free in USA), or 1(312) 455-8498 (outside USA)

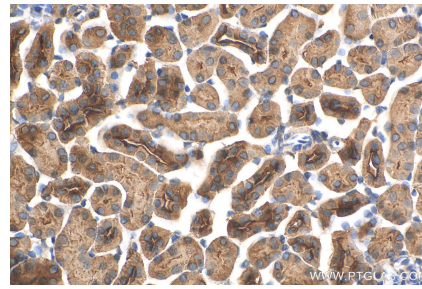
E: [proteintech@ptglab.com](mailto:proteintech@ptglab.com)  
W: [ptglab.com](http://ptglab.com)

This product is exclusively available under Proteintech Group brand and is not available to purchase from any other manufacturer.

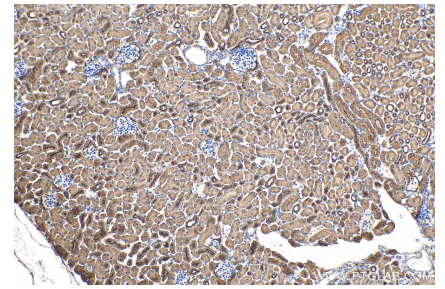
## Données de validation sélectionnées



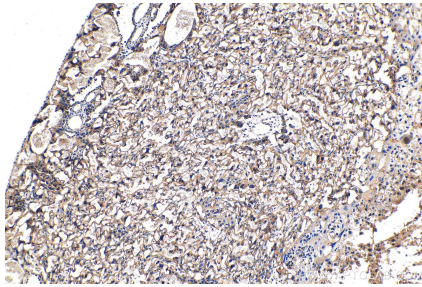
Various lysates were subjected to SDS PAGE followed by western blot with 30467-1-AP (ANKIB1 antibody) at dilution of 1:2000 incubated at room temperature for 1.5 hours.



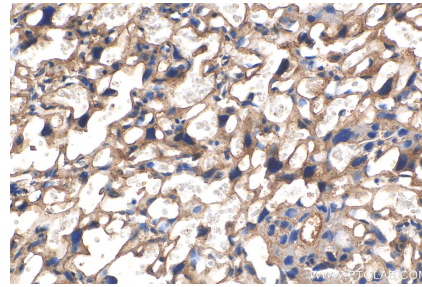
Immunohistochemical analysis of paraffin-embedded mouse kidney tissue slide using 30467-1-AP (ANKIB1 antibody) at dilution of 1:200 (under 40x lens). Heat mediated antigen retrieval with Tris-EDTA buffer (pH 9.0).



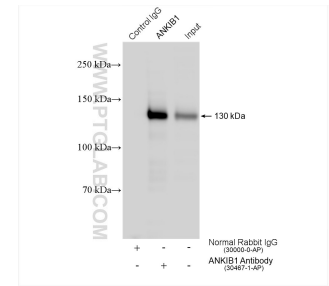
Immunohistochemical analysis of paraffin-embedded mouse kidney tissue slide using 30467-1-AP (ANKIB1 antibody) at dilution of 1:200 (under 10x lens). Heat mediated antigen retrieval with Tris-EDTA buffer (pH 9.0).



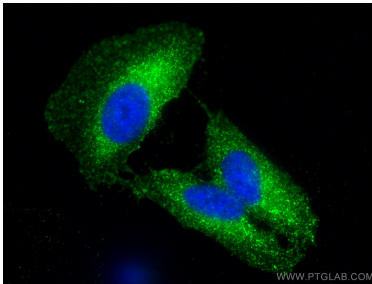
Immunohistochemical analysis of paraffin-embedded mouse placenta tissue slide using 30467-1-AP (ANKIB1 antibody) at dilution of 1:200 (under 10x lens). Heat mediated antigen retrieval with Tris-EDTA buffer (pH 9.0).



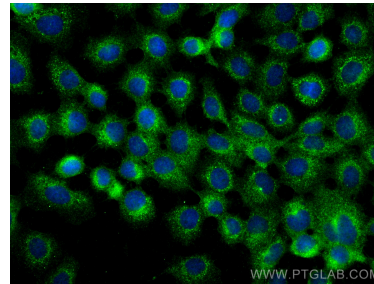
Immunohistochemical analysis of paraffin-embedded mouse placenta tissue slide using 30467-1-AP (ANKIB1 antibody) at dilution of 1:200 (under 40x lens). Heat mediated antigen retrieval with Tris-EDTA buffer (pH 9.0).



IP result of anti-ANKIB1(IP:30467-1-AP, 4ug; Detection:30467-1-AP 1:4000) with HeLa cells lysate 1560 ug.



Immunofluorescent analysis of (-20°C Methanol) fixed U2OS cells using ANKIB1 antibody (30467-1-AP) at dilution of 1:200 and CoraLite®488-Conjugated AffiniPure Goat Anti-Rabbit IgG(H+L).



Immunofluorescent analysis of (-20°C Methanol) fixed A431 cells using ANKIB1 antibody (30467-1-AP) at dilution of 1:200 and CoraLite®488-Conjugated AffiniPure Goat Anti-Rabbit IgG(H+L).