

À des fins de recherche uniquement

# Anticorps Polyclonal de lapin anti-APOE



Numéro de catalogue: 30535-1-AP

## Informations de base

<b>Numéro de catalogue:</b> 30535-1-AP	<b>Numéro d'acquisition GenBank:</b> BC003557	<b>Méthode de purification:</b> Purification par affinité contre l'antigène
<b>Taille:</b> 150ul , Concentration: 300 µg/ml by Nanodrop;	<b>Identification du gène (NCBI):</b> 348	<b>Dilutions recommandées:</b> WB 1:1000-1:8000 IF 1:50-1:500
<b>Hôte:</b> Lapin	<b>Nom complet:</b> apolipoprotein E	
<b>Isotype:</b> IgG	<b>MW calculé:</b> 36 kDa	
	<b>MW observés:</b> 35 kDa, 75 kDa	

## Applications

<b>Applications testées:</b> IF, WB, ELISA	<b>Contrôles positifs:</b> WB : cellules HepG2, cellules HuH-7
<b>Spécificité de l'espèce:</b> Humain	<b>IF :</b> cellules HepG2,

## Informations générales

The apolipoprotein E (APOE) is a 299-amino acid polypeptide that mediates the binding, internalization, and catabolism of lipoprotein particles, and also serves as a ligand for the LDL (apo B/E) receptor and for the specific apo-E receptor (chylomicron remnant) of hepatic tissues. The very strong association of the APOE ε4 allele with AD risk and its role in the accumulation of amyloid β in brains of people and animal models solidify the biological relevance of APOE isoforms but do not provide mechanistic insight.

## Stockage

**Stockage:**  
Stocker à -20°C. Stable pendant un an après l'expédition.  
**Tampon de stockage:**  
PBS avec azoture de sodium à 0,02 % et glycérol à 50 % pH 7,3  
L'aliquotage n'est pas nécessaire pour le stockage à -20C

**\*\*\* Les 20ul contiennent 0,1% de BSA.**

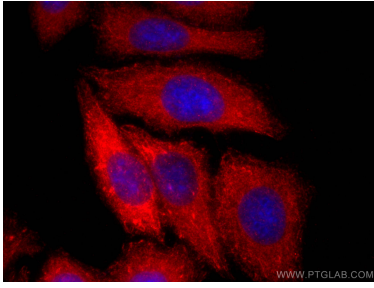
For technical support and original validation data for this product please contact:

T: 1 (888) 4PTGLAB (1-888-478-4522) (toll free in USA), or 1(312) 455-8498 (outside USA)

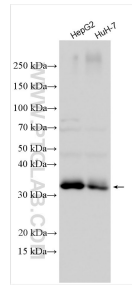
E: [proteintech@ptglab.com](mailto:proteintech@ptglab.com)  
W: [ptglab.com](http://ptglab.com)

**This product is exclusively available under Proteintech Group brand and is not available to purchase from any other manufacturer.**

## Données de validation sélectionnées



Immunofluorescent analysis of (-20°C Ethanol) fixed HepG2 cells using APOE antibody (30535-1-AP) at dilution of 1:200 and CoraLite®594-Conjugated AffiniPure Goat Anti-Rabbit IgG(H+L).



Various lysates were subjected to SDS PAGE followed by western blot with 30535-1-AP (APOE antibody) at dilution of 1:4000 incubated at room temperature for 1.5 hours.